

## Anti-BEST1 antibody (STJ500231)

STJ500231

### GENERAL INFORMATION

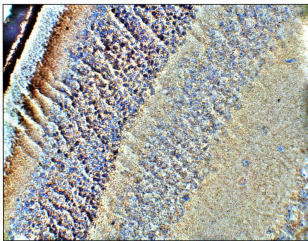
<b>Product Type</b>	Primary antibodies
<b>Short Description</b>	Rabbit polyclonal antibody anti-BEST1 is suitable for use in Confocal Microscopy, ELISA, Immunofluorescence, Immunohistochemistry, Immunoprecipitation and Western Blot research applications.
<b>Applications</b>	CM, ELISA, IF, IHC, IP, WB
<b>Host/Source</b>	Rabbit
<b>Reactivity</b>	Human, Mouse, Rat

### PRODUCT PROPERTIES

<b>Clonality</b>	Polyclonal
<b>Clone ID</b>	
<b>Concentration</b>	0.68 µg/µl
<b>Conjugation</b>	Unconjugated
<b>Purification</b>	Affinity Purified
<b>Dilution Range</b>	WB: 1:500 DB: 1:10, 000 ELISA: 1:10, 000 IP: 1:200 IHC: 1:100 ICC: 1:100 IF: 1:100 CFM: 1:100
<b>Formulation</b>	
<b>Isotype</b>	IgG
<b>Storage</b>	Store at -20°C for long term storage. Avoid freeze-thaw cycles.
<b>Instruction</b>	

### TARGET INFORMATION

<b>Gene ID</b>	7439
<b>Gene Symbol</b>	BEST1
<b>Uniprot ID</b>	BEST1_HUMAN
<b>Immunogen</b>	N-epitope Synthetic peptide corresponding to unique amino acid sequences on human Bestrophin 1 protein.
<b>Immunogen Region</b>	
<b>Specificity</b>	
<b>Immunogen Sequence</b>	



Immunohistochemistry of mouse tissue with Anti-BEST1 primary antibody (STJ500231) at 1:50 dilution in Buffer. Section was treated with DAB and Haematoxylin stain. Magnification is at 40X.