

## Anti-BCL6 antibody (610-660) (STJ500219)

STJ500219

### GENERAL INFORMATION

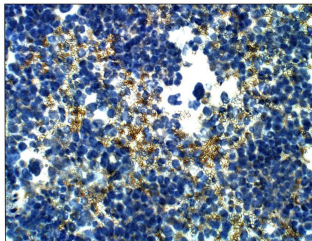
<b>Product Type</b>	Primary antibodies
<b>Short Description</b>	Rabbit polyclonal antibody anti-BCL6 (610-660) is suitable for use in ELISA, Immunohistochemistry, Immunoprecipitation and Western Blot research applications.
<b>Applications</b>	ELISA, IHC, IP, WB
<b>Host/Source</b>	Rabbit
<b>Reactivity</b>	Human, Monkey, Mouse, Rat

### PRODUCT PROPERTIES

<b>Clonality</b>	Polyclonal
<b>Clone ID</b>	
<b>Concentration</b>	0.6 µg/µl
<b>Conjugation</b>	Unconjugated
<b>Purification</b>	Affinity Purified
<b>Dilution Range</b>	WB: 1:500 DB: 1:10, 000 ELISA: 1:10, 000 IP: 1:150 IHC: 1:50-1:150
<b>Formulation</b>	
<b>Isotype</b>	IgG
<b>Storage</b>	Store at -20°C for long term storage. Avoid freeze-thaw cycles.
<b>Instruction</b>	

### TARGET INFORMATION

<b>Gene ID</b>	604
<b>Gene Symbol</b>	BCL6
<b>Uniprot ID</b>	BCL6_HUMAN
<b>Immunogen</b>	Synthetic peptide taken within amino acid region 610-660 on human B-cell lymphoma 6 protein isoform 1.
<b>Immunogen Region</b>	610-660
<b>Specificity</b>	Will detect BCL6 isoform 1, BCL6 isoform 2 and BCL6S protein.
<b>Immunogen Sequence</b>	



Immunohistochemistry of mouse spleen with Anti-BCL6 primary antibody (STJ500219) at 1:50 dilution in Buffer. Section was treated with DAB and Haematoxylin stain. Magnification is at 40X.