

Anti-BACE2 antibody (350-396) (STJ500208)

STJ500208

GENERAL INFORMATION

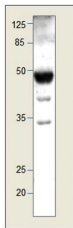
Product Type	Primary antibodies
Short Description	Rabbit polyclonal antibody anti-BACE2 (350-396) is suitable for use in ELISA, Immunoprecipitation and Western Blot research applications.
Applications	ELISA, IP, WB
Host/Source	Rabbit
Reactivity	Human, Monkey

PRODUCT PROPERTIES

Clonality	Polyclonal
Clone ID	
Concentration	0.55-0.59 µg/µl
Conjugation	Unconjugated
Purification	Affinity Purified
Dilution Range	WB: 1:500 DB: 1:10, 000 ELISA: 1:10, 000 IP: 1:200
Formulation	
Isotype	IgG
Storage Instruction	Store at -20°C for long term storage. Avoid freeze-thaw cycles.

TARGET INFORMATION

Gene ID	25825
Gene Symbol	BACE2
Uniprot ID	BACE2_HUMAN
Immunogen	Synthetic peptide taken within amino acid region 350-396 on human BACE2B protein.
Immunogen Region	350-396
Specificity	This antibody will only detect BACE2B. This antibody will not cross react with BACE2A or BACE2B.
Immunogen Sequence	



Western blot with Anti-BACE2 Antibody (STJ500208) of muscle at 1:500 dilution in buffer.

This product is suitable for in-vitro studies under the RESEARCH USE ONLY [RUO] licence. This product must not be used as for diagnostic or other medical purposes.
St John's Laboratory Ltd, Knowledge Dock Business Centre, University Way, London, E16 2RD | Tel: 0208 223 3081