

Anti-BACE2 antibody (490-518) (STJ500207)

STJ500207

GENERAL INFORMATION

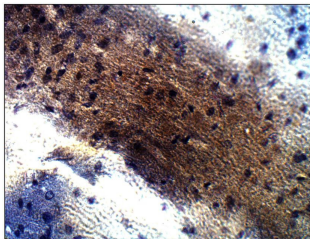
Product Type	Primary antibodies
Short Description	Rabbit polyclonal antibody anti-BACE2 (490-518) is suitable for use in ELISA, Immunohistochemistry, Immunoprecipitation and Western Blot research applications.
Applications	ELISA, IHC, IP, WB
Host/Source	Rabbit
Reactivity	Human, Mouse, Rat

PRODUCT PROPERTIES

Clonality	Polyclonal
Clone ID	
Concentration	0.72-0.76 µg/µl
Conjugation	Unconjugated
Purification	Affinity Purified
Dilution Range	WB: 1:500 DB: 1:10, 000 ELISA: 1:10, 000 IP: 1:200 IHC: 1:50-1:150
Formulation	
Isotype	IgG
Storage	Store at -20°C for long term storage. Avoid freeze-thaw cycles.
Instruction	

TARGET INFORMATION

Gene ID	25825
Gene Symbol	BACE2
Uniprot ID	BACE2_HUMAN
Immunogen	Synthetic peptide taken within amino acid region 490-518 on human BACE2 protein.
Immunogen Region	490-518
Specificity	This antibody will only detect BACE2A and BACE2C protein.
Immunogen Sequence	



Immunohistochemistry of rat Cortex with Anti-BACE2 primary antibody (STJ500207) at 1:50 dilution in Buffer. Section was treated with DAB and Haematoxylin stain. Magnification is at 40x.