

Anti-Baboon antibody (200-221) (STJ500201)

STJ500201

GENERAL INFORMATION

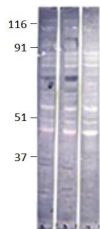
Product Type	Primary antibodies
Short Description	Rabbit polyclonal antibody anti-Baboon (200-221) is suitable for use in Confocal Microscopy, ELISA, Immunofluorescence, Immunohistochemistry, Immunoprecipitation and Western Blot research applications.
Applications	CM, ELISA, IF, IHC, IP, WB
Host/Source	Rabbit
Reactivity	D.melanogaster

PRODUCT PROPERTIES

Clonality	Polyclonal
Clone ID	
Concentration	0.6 µg/µl
Conjugation	Unconjugated
Purification	Affinity Purified
Dilution Range	WB: 1:500 DB: 1:10, 000 ELISA: 1:10, 000 IP: 1:200 IHC: 1:200 ICC: 1:200 IF: 1:200 CFM: 1:200
Formulation	
Isotype	IgG
Storage Instruction	Store at -20°C for long term storage. Avoid freeze-thaw cycles.

TARGET INFORMATION

Gene ID	
Gene Symbol	
Uniprot ID	
Immunogen	N-epitope Synthetic peptide corresponding to amino acid region 200-221 of <i>Drosophila melanogaster</i> protein. The peptide was covalently modified for conjugation. Synthetic peptide: CNKNENMKRIFEDVPHRLTS
Immunogen Region	200-221
Specificity	
Immunogen Sequence	



Western blot with Anti-Baboon Antibody (STJ500201) with Baboon A (1 & 2) and mock transfected cells (3), at 1:500 dilution in buffer.