

Anti-ATG16L1 antibody (560-610) (STJ500180)

STJ500180

GENERAL INFORMATION

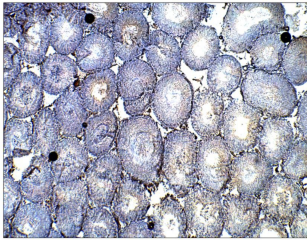
Product Type	Primary antibodies
Short Description	Rabbit polyclonal antibody anti-ATG16L1 (560-610) is suitable for use in ELISA, Immunohistochemistry, Immunoprecipitation and Western Blot research applications.
Applications	ELISA, IHC, IP, WB
Host/Source	Rabbit
Reactivity	Human, Mouse, Rat

PRODUCT PROPERTIES

Clonality	Polyclonal
Clone ID	
Concentration	0.5 µg/µl
Conjugation	Unconjugated
Purification	Affinity Purified
Dilution Range	WB: 1:500 ELISA: 1:10, 000 IP: 1:150 IHC: 1:50-1:150
Formulation	
Isotype	IgG
Storage Instruction	Store at -20°C for long term storage. Avoid freeze-thaw cycles.

TARGET INFORMATION

Gene ID	55054
Gene Symbol	ATG16L1
Uniprot ID	A16L1_HUMAN
Immunogen	Synthetic peptide taken within amino acid region 560-610 on human Autophagy-related protein 16-1.
Immunogen Region	560-610
Specificity	
Immunogen Sequence	



Immunohistochemistry of rat tissue with Anti-ATG16L1 primary antibody (STJ500180) at 1:50 dilution in Buffer. Section was treated with DAB and Haematoxylin stain. Magnification is at 5X.