

Anti-ASNA1 antibody (300-348) (STJ500177)

STJ500177

GENERAL INFORMATION

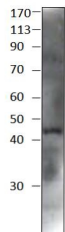
Product Type	Primary antibodies
Short Description	Rabbit polyclonal antibody anti-ASNA1 (300-348) is suitable for use in ELISA, Immunoprecipitation and Western Blot research applications.
Applications	ELISA, IP, WB
Host/Source	Rabbit
Reactivity	Human, Mouse, Rat

PRODUCT PROPERTIES

Clonality	Polyclonal
Clone ID	
Concentration	0.52-.53 µg/µl
Conjugation	Unconjugated
Purification	Affinity Purified
Dilution Range	WB: 1:500 DB: 1:10, 000 ELISA: 1:10, 000 IP: 1:200
Formulation	
Isotype	IgG
Storage Instruction	Store at -20°C for long term storage. Avoid freeze-thaw cycles.

TARGET INFORMATION

Gene ID	439
Gene Symbol	GET3
Uniprot ID	GET3_HUMAN
Immunogen	Synthetic peptide taken within amino acid region 300-348 on human ATPase ASNA1 protein.
Immunogen Region	300-348
Specificity	
Immunogen Sequence	



Western blot with Anti-ASNA1 Antibody (STJ500177) with peptide on at 1:500 dilution in buffer.

This product is suitable for in-vitro studies under the RESEARCH USE ONLY [RUO] licence. This product must not be used as for diagnostic or other medical purposes.
 St John's Laboratory Ltd, Knowledge Dock Business Centre, University Way, London, E16 2RD | Tel: 0208 223 3081