

Anti-SLC7A10 antibody (450-500) (STJ500166)

STJ500166

GENERAL INFORMATION

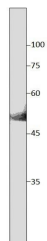
Product Type	Primary antibodies
Short Description	Rabbit polyclonal antibody anti-SLC7A10 (450-500) is suitable for use in Confocal Microscopy, ELISA, Immunocytochemistry, Immunofluorescence, Immunohistochemistry, Immunoprecipitation and Western Blot research applications.
Applications	CM, ELISA, ICC, IF, IHC, IP, WB
Host/Source	Rabbit
Reactivity	Human, Mouse, Rat

PRODUCT PROPERTIES

Clonality	Polyclonal
Clone ID	
Concentration	0.50 µg/µl
Conjugation	Unconjugated
Purification	Affinity Purified
Dilution Range	WB: 1:500-1:1,000 DB: 1:4,000 ELISA: 1:4,000 IP: 1:200 IHC: 1:50 ICC: 1:50 IF: 1:50 CFM: 1:50
Formulation	
Isotype	IgG
Storage	Store at -20°C for long term storage. Avoid freeze-thaw cycles.
Instruction	

TARGET INFORMATION

Gene ID	56301
Gene Symbol	SLC7A10
Uniprot ID	AAA1_HUMAN
Immunogen	Synthetic peptide taken within amino acid region 450-500 on rat Asc-type amino acid transporter 1 protein.
Immunogen Region	450-500
Specificity	
Immunogen Sequence	



Western blot with Anti-SLC7A10 Antibody (STJ500166) of mouse brain at 1:250 dilution in buffer, 1% milk overnight.