

Anti-SLC7A10 antibody (1-50) (STJ500165)

STJ500165

GENERAL INFORMATION

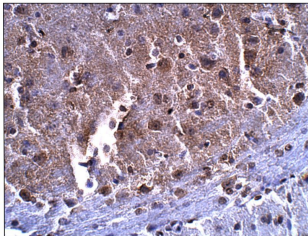
| | |
|--------------------------|--|
| Product Type | Primary antibodies |
| Short Description | Rabbit polyclonal antibody anti-SLC7A10 (1-50) is suitable for use in Confocal Microscopy, ELISA, Immunocytochemistry, Immunofluorescence, Immunohistochemistry, Immunoprecipitation and Western Blot research applications. |
| Applications | CM, ELISA, ICC, IF, IHC, IP, WB |
| Host/Source | Rabbit |
| Reactivity | Mouse, Rat |

PRODUCT PROPERTIES

| | |
|-----------------------|--|
| Clonality | Polyclonal |
| Clone ID | |
| Concentration | 0.50-0.75 µg/µl |
| Conjugation | Unconjugated |
| Purification | Affinity Purified |
| Dilution Range | WB: 1:500-1:1,000 DB: 1:4,000 ELISA: 1:4,000 IP: 1:200 IHC: 1:50 ICC: 1:50 IF: 1:50 CFM: 1:50 |
| Formulation | |
| Isotype | IgG |
| Storage | Store at -20°C for long term storage. Avoid freeze-thaw cycles. |
| Instruction | |

TARGET INFORMATION

| | |
|---------------------------|---|
| Gene ID | 56301 |
| Gene Symbol | SLC7A10 |
| Uniprot ID | AAA1_HUMAN |
| Immunogen | Synthetic peptide taken within amino acid region 1-50 on rat Asc-type amino acid transporter 1 protein. |
| Immunogen Region | 1-50 |
| Specificity | |
| Immunogen Sequence | |



Immunohistochemistry of mouse brain with Anti-SLC7A10 primary antibody (STJ500165) at 1:50 dilution in Buffer. Section was treated with DAB and Haematoxylin stain. Magnification is at 40X.

This product is suitable for in-vitro studies under the RESEARCH USE ONLY [RUO] licence. This product must not be used as for diagnostic or other medical purposes.
St John's Laboratory Ltd, Knowledge Dock Business Centre, University Way, London, E16 2RD | Tel: 0208 223 3081