

Anti-ARHGEF7 antibody (595-805) (STJ500159)

STJ500159

GENERAL INFORMATION

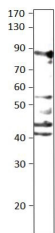
| | |
|--------------------------|--|
| Product Type | Primary antibodies |
| Short Description | Rabbit polyclonal antibody anti-ARHGEF7 (595-805) is suitable for use in ELISA and Western Blot research applications. |
| Applications | ELISA, WB |
| Host/Source | Rabbit |
| Reactivity | Human, Mouse, Rat |

PRODUCT PROPERTIES

| | |
|----------------------------|---|
| Clonality | Polyclonal |
| Clone ID | |
| Concentration | 0.59 µg/µl |
| Conjugation | Unconjugated |
| Purification | Affinity Purified |
| Dilution Range | WB: 1:500 DB: 1:10, 000 ELISA: 1:10, 000 IP: 1:200 |
| Formulation | |
| Isotype | IgG |
| Storage Instruction | Store at -20°C for long term storage. Avoid freeze-thaw cycles. |

TARGET INFORMATION

| | |
|---------------------------|--|
| Gene ID | 8874 |
| Gene Symbol | ARHGEF7 |
| Uniprot ID | ARHG7_HUMAN |
| Immunogen | Synthetic peptide taken within amino acid region 595-805 on human ARHGEF7 protein. |
| Immunogen Region | 595-805 |
| Specificity | |
| Immunogen Sequence | |



Western blot with Anti-ARHGEF7 Antibody (STJ500159) of MDA cell at 1:500 dilution in buffer.

This product is suitable for in-vitro studies under the RESEARCH USE ONLY [RUO] licence. This product must not be used as for diagnostic or other medical purposes.
St John's Laboratory Ltd, Knowledge Dock Business Centre, University Way, London, E16 2RD | Tel: 0208 223 3081