

Anti-ARF4 antibody (STJ500156)

STJ500156

GENERAL INFORMATION

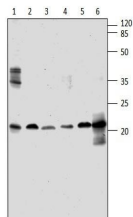
Product Type	Primary antibodies
Short Description	Rabbit polyclonal antibody anti-ARF4 is suitable for use in ELISA, Immunoprecipitation and Western Blot research applications.
Applications	ELISA, IP, WB
Host/Source	Rabbit
Reactivity	Human, Mouse, Rat

PRODUCT PROPERTIES

Clonality	Polyclonal
Clone ID	
Concentration	0.71-0.75 µg/µl
Conjugation	Unconjugated
Purification	Affinity Purified
Dilution Range	WB: 1:500 DB: 1:10, 000 ELISA: 1:10, 000 IP: 1:200
Formulation	
Isotype	IgG
Storage Instruction	Store at -20°C for long term storage. Avoid freeze-thaw cycles.

TARGET INFORMATION

Gene ID	79120
Gene Symbol	Arf4
Uniprot ID	ARF4_RAT
Immunogen	Synthetic peptide corresponding to unique amino acid sequence on ARF4 protein.
Immunogen Region	
Specificity	
Immunogen Sequence	



Western blot with Anti-ARF4 Antibody (STJ500156) with various mouse tissues and ARF4 positive control. 1) Rat Hippocampus 2) Rat Lung 3) PC-ARF4 4) Rat Spleen 5) Rat Kidney. 1:250 dilution in buffer.