

## Anti-ARF1 antibody (STJ500153)

STJ500153

### GENERAL INFORMATION

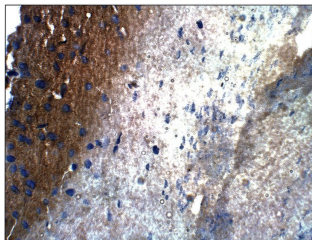
<b>Product Type</b>	Primary antibodies
<b>Short Description</b>	Rabbit polyclonal antibody anti-ARF1 is suitable for use in ELISA, Immunocytochemistry, Immunofluorescence, Immunoprecipitation and Western Blot research applications.
<b>Applications</b>	ELISA, ICC, IF, IP, WB
<b>Host/Source</b>	Rabbit
<b>Reactivity</b>	Human, Mouse, Rat

### PRODUCT PROPERTIES

<b>Clonality</b>	Polyclonal
<b>Clone ID</b>	
<b>Concentration</b>	0.58-0.65 µg/µl
<b>Conjugation</b>	Unconjugated
<b>Purification</b>	Affinity Purified
<b>Dilution Range</b>	WB: 1:500 DB: 1:10, 000 ELISA: 1:10, 000 IP: 1:100 ICC: Use at an assay dependent concentration.
<b>Formulation</b>	
<b>Isotype</b>	IgG
<b>Storage</b>	Store at -20°C for long term storage. Avoid freeze-thaw cycles.
<b>Instruction</b>	

### TARGET INFORMATION

<b>Gene ID</b>	64310
<b>Gene Symbol</b>	Arf1
<b>Uniprot ID</b>	ARF1_RAT
<b>Immunogen</b>	Synthetic peptide corresponding to unique amino acid sequence on Rat ARF1 protein. The peptide was covalently modified post-synthetically to achieve desired antigenicity.
<b>Immunogen Region</b>	
<b>Specificity</b>	does not cross react to other members of the Ras family or to other ARF members. This antibody will label ARF isoform 1, 2, 3, and 4.
<b>Immunogen Sequence</b>	



Immunohistochemistry with Anti-ARF1 Antibody (STJ500153) at 1:50 dilution in Buffer. DAB (brown) staining and Haematoxylin QS (blue) counterstain. 40X magnification. FFPE section.

This product is suitable for in-vitro studies under the RESEARCH USE ONLY [RUO] licence. This product must not be used as for diagnostic or other medical purposes.  
St John's Laboratory Ltd, Knowledge Dock Business Centre, University Way, London, E16 2RD | Tel: 0208 223 3081