

Anti-AQP1 antibody (215-265) {FITC} (STJ500116)

STJ500116

GENERAL INFORMATION

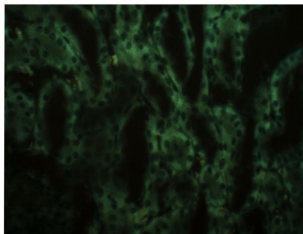
Product Type	Primary antibodies
Short Description	Rabbit polyclonal antibody anti-AQP1 (215-265) is suitable for use in ELISA, Immunocytochemistry, Immunofluorescence, Immunohistochemistry, Immunoprecipitation and Western Blot research applications.
Applications	ELISA, ICC, IF, IHC, IP, WB
Host/Source	Rabbit
Reactivity	Bovine, Human, Mouse, Rat, Sheep

PRODUCT PROPERTIES

Clonality	Polyclonal
Clone ID	
Concentration	0.55-0.59 µg/µl
Conjugation	FITC
Purification	Affinity Purified
Dilution Range	WB: 1:500 ELISA: 1:10, 000 IP: 1:200 IHC: 1:100 ICC: 1:100 IF: 1:100
Formulation	
Isotype	IgG
Storage Instruction	Store at -20°C for long term storage. Avoid freeze-thaw cycles.

TARGET INFORMATION

Gene ID	358
Gene Symbol	AQP1
Uniprot ID	AQP1_HUMAN
Immunogen	Synthetic peptide taken within amino acid region 215-265 on human Aquaporin 1 protein.
Immunogen Region	215-265
Specificity	
Immunogen Sequence	



Immunohistochemistry of rat kidney with Anti-AQP1 primary antibody (FITC) (STJ500116) at 1:100 dilution in Buffer. Section was treated with DAB and Haematoxylin stain.