

Anti-APH1B antibody (235-257) (STJ500105)

STJ500105

GENERAL INFORMATION

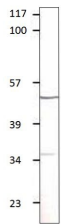
Product Type	Primary antibodies
Short Description	Rabbit polyclonal antibody anti-APH1B (235-257) is suitable for use in ELISA and Western Blot research applications.
Applications	ELISA, WB
Host/Source	Rabbit
Reactivity	C.elegans, Human, Mouse, Rat

PRODUCT PROPERTIES

Clonality	Polyclonal
Clone ID	
Concentration	0.6 µg/µl
Conjugation	Unconjugated
Purification	Affinity Purified
Dilution Range	WB: 1:500 DB: 1:10, 000 ELISA: 1:10, 000
Formulation	
Isotype	IgG
Storage Instruction	Store at -20°C for long term storage. Avoid freeze-thaw cycles.

TARGET INFORMATION

Gene ID	83464
Gene Symbol	APH1B
Uniprot ID	APH1B_HUMAN
Immunogen	Synthetic peptide taken within amino acid region 235-257 of Human Presenilin stabilizing protein.
Immunogen Region	235-257
Specificity	APH1B-101AP does not cross react to other component of gamma secretase complex nor with other proteins.
Immunogen Sequence	



Western blot with Anti-APH1B Antibody (STJ500105) with peptide on at 1:500 dilution in buffer.

This product is suitable for in-vitro studies under the RESEARCH USE ONLY [RUO] licence. This product must not be used as for diagnostic or other medical purposes.
St John's Laboratory Ltd, Knowledge Dock Business Centre, University Way, London, E16 2RD | Tel: 0208 223 3081