

Anti-SLC25A5 antibody (150-200) (STJ500087)

STJ500087

GENERAL INFORMATION

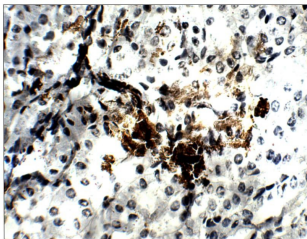
Product Type	Primary antibodies
Short Description	Rabbit polyclonal antibody anti-SLC25A5 (150-200) is suitable for use in Confocal Microscopy, ELISA, Immunocytochemistry, Immunofluorescence, Immunohistochemistry, Immunoprecipitation and Western Blot research applications.
Applications	CM, ELISA, ICC, IF, IHC, IP, WB
Host/Source	Rabbit
Reactivity	Human, Mouse, Rat

PRODUCT PROPERTIES

Clonality	Polyclonal
Clone ID	
Concentration	0.68 µg/µl
Conjugation	Unconjugated
Purification	Affinity Purified
Dilution Range	WB: 1:500 DB: 1:10, 000 ELISA: 1:10, 000 IP: 1:200 IHC: 1:100 ICC: 1:100 IF: 1:100 CFM: 1:100
Formulation	
Isotype	IgG
Storage	Store at -20°C for long term storage. Avoid freeze-thaw cycles.
Instruction	

TARGET INFORMATION

Gene ID	292
Gene Symbol	SLC25A5
Uniprot ID	ADT2_HUMAN
Immunogen	Synthetic peptide taken within amino acid region 150-200 on human ADP/ATP translocase
Immunogen Region	150-200
Specificity	
Immunogen Sequence	



Immunohistochemistry of rat kidney with Anti-SLC25A5 primary antibody (STJ500087) at 1:100 dilution in Buffer. Section was treated with DAB and Haematoxylin stain. Magnification is at 40X.

This product is suitable for in-vitro studies under the RESEARCH USE ONLY [RUO] licence. This product must not be used as for diagnostic or other medical purposes.
St John's Laboratory Ltd, Knowledge Dock Business Centre, University Way, London, E16 2RD | Tel: 0208 223 3081