

Anti-AMACR antibody (260-310) (STJ500070)

STJ500070

GENERAL INFORMATION

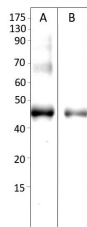
Product Type	Primary antibodies
Short Description	Rabbit polyclonal antibody anti-AMACR (260-310) is suitable for use in Confocal Microscopy, Dot Blot, ELISA, Immunocytochemistry, Immunofluorescence, Immunohistochemistry, Immunoprecipitation and Western Blot research applications.
Applications	CM, DB, ELISA, ICC, IF, IHC, IP, WB
Host/Source	Rabbit
Reactivity	Human, Mouse

PRODUCT PROPERTIES

Clonality	Polyclonal
Clone ID	
Concentration	0.6 µg/µl
Conjugation	Unconjugated
Purification	Affinity Purified
Dilution Range	WB: 1:500 DB: 1:10, 000 ELISA: 1:10, 000 IP: 1:200 IHC: 1:100 ICC: 1:100 IF: 1:200 CFM: 1:100
Formulation	
Isotype	IgG
Storage Instruction	Store at -20°C for long term storage. Avoid freeze-thaw cycles.

TARGET INFORMATION

Gene ID	23600
Gene Symbol	AMACR
Uniprot ID	AMACR_HUMAN
Immunogen	Synthetic peptide taken within amino acid region 260-310 on human alpha-methylacyl-CoA racemase protein.
Immunogen Region	260-310
Specificity	
Immunogen Sequence	



Western blot with Anti-AMACR Antibody (STJ500070) of HEK293 cell at 1:500 dilution in buffer.