

Anti-AKR1B1 antibody (250-350) {FITC} (STJ500068)

STJ500068

GENERAL INFORMATION

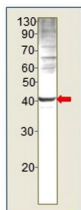
Product Type	Primary antibodies
Short Description	Rabbit polyclonal antibody anti-AKR1B1 (250-350) is suitable for use in ELISA, Immunohistochemistry, Immunoprecipitation and Western Blot research applications.
Applications	ELISA, IHC, IP, WB
Host/Source	Rabbit
Reactivity	Human

PRODUCT PROPERTIES

Clonality	Polyclonal
Clone ID	
Concentration	0.50 µg/µl
Conjugation	FITC
Purification	Affinity Purified
Dilution Range	WB: 1:500 DB: 1:10, 000 ELISA: 1:10, 000 IP: 1:200 IHC: 1:50-1:100
Formulation	
Isotype	IgG
Storage	Store at -20°C for long term storage. Avoid freeze-thaw cycles.
Instruction	

TARGET INFORMATION

Gene ID	231
Gene Symbol	AKR1B1
Uniprot ID	ALDR_HUMAN
Immunogen	Synthetic peptide taken within amino acid region 250-350 on human Aldo-keto reductase family 1, member B1 protein.
Immunogen Region	250-350
Specificity	
Immunogen Sequence	



Western blot of T47D cells with Anti-AKR1B1 Antibody (FITC) (STJ500068) at 1:500 dilution in buffer.