

Anti-AIM2 antibody (240-340) {FITC} (STJ500059)

STJ500059

GENERAL INFORMATION

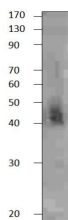
Product Type	Primary antibodies
Short Description	Rabbit polyclonal antibody anti-AIM2 (240-340) is suitable for use in ELISA, Immunohistochemistry, Immunoprecipitation and Western Blot research applications.
Applications	ELISA, IHC, IP, WB
Host/Source	Rabbit
Reactivity	Human, Mouse

PRODUCT PROPERTIES

Clonality	Polyclonal
Clone ID	
Concentration	0.58 µg/µl
Conjugation	FITC
Purification	Affinity Purified
Dilution Range	WB: 1:500 DB: 1:10, 000 ELISA: 1:10, 000 IP: 1:200 IHC: 1:50-1:100
Formulation	
Isotype	IgG
Storage	Store at -20°C for long term storage. Avoid freeze-thaw cycles.
Instruction	

TARGET INFORMATION

Gene ID	9447
Gene Symbol	AIM2
Uniprot ID	AIM2_HUMAN
Immunogen	Synthetic peptide taken within amino acid region 240-340 on human AIM2 protein.
Immunogen Region	240-340
Specificity	
Immunogen Sequence	



Western blot with Anti-AIM2 Antibody (FITC) (STJ500059) of cerebral cortex at 1:500 dilution in buffer.