

Anti-AFP antibody (Full Length) (STJ500051)

STJ500051

GENERAL INFORMATION

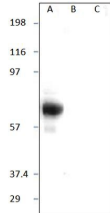
Product Type	Primary antibodies
Short Description	Rabbit polyclonal antibody anti-AFP (Full Length) is suitable for use in ELISA, Immunohistochemistry, Immunoprecipitation and Western Blot research applications.
Applications	ELISA, IHC, IP, WB
Host/Source	Rabbit
Reactivity	Human, Monkey, Rat

PRODUCT PROPERTIES

Clonality	Polyclonal
Clone ID	
Concentration	0.68 µg/µl
Conjugation	Unconjugated
Purification	Affinity Purified
Dilution Range	WB: 1:500 ELISA: 1:10,000 IP: 1:200 IHC: 1:100
Formulation	
Isotype	IgG
Storage Instruction	Store at -20°C for long term storage. Avoid freeze-thaw cycles.

TARGET INFORMATION

Gene ID	174
Gene Symbol	AFP
Uniprot ID	FETA_HUMAN
Immunogen	Full length native protein (purified) corresponding to Human alpha 1 Fetoprotein. Purified human alpha 1 Fetoprotein.
Immunogen Region	Full Length
Specificity	
Immunogen Sequence	



Western blot with Anti-AFP Antibody (STJ500051) and peptides and human serum albumin at 1:500 dilution in buffer.