

Anti-ACTB antibody (1-50) (STJ500039)

STJ500039

GENERAL INFORMATION

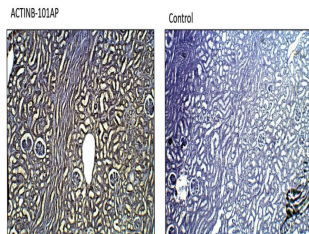
Product Type	Primary antibodies
Short Description	Rabbit polyclonal antibody anti-ACTB (1-50) is suitable for use in ELISA, Immunohistochemistry, Immunoprecipitation and Western Blot research applications.
Applications	ELISA, IHC, IP, WB
Host/Source	Rabbit
Reactivity	Human, Monkey

PRODUCT PROPERTIES

Clonality	Polyclonal
Clone ID	
Concentration	0.5-1.5 µg/µl
Conjugation	Unconjugated
Purification	Affinity Purified
Dilution Range	WB: 1:500 ELISA: 1:10, 000 IP: 1:200 IHC: 1:50-1:150 ICC: 1:50-1:150
Formulation	
Isotype	IgG
Storage	Store at -20°C for long term storage. Avoid freeze-thaw cycles.
Instruction	

TARGET INFORMATION

Gene ID	60
Gene Symbol	ACTB
Uniprot ID	ACTB_HUMAN
Immunogen	Synthetic peptide taken within amino acid region 1-50 on human Actin, cytoplasmic 1 protein.
Immunogen Region	1-50
Specificity	
Immunogen Sequence	



Immunohistochemistry with Anti-ACTB Antibody (STJ500039) at 1:50 dilution in Buffer. DAB (brown) staining and Haematoxylin QS (blue) counterstain. 40X magnification. FFPE section. Right slide is negative control.