

Anti-ACKR2 antibody (200-300) {FITC} (STJ500033)

STJ500033

GENERAL INFORMATION

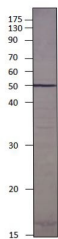
Product Type	Primary antibodies
Short Description	Rabbit polyclonal antibody anti-ACKR2 (200-300) is suitable for use in ELISA and Western Blot research applications.
Applications	ELISA, WB
Host/Source	Rabbit
Reactivity	Human, Mouse, Rat

PRODUCT PROPERTIES

Clonality	Polyclonal
Clone ID	
Concentration	0.55-0.75 µg/µl
Conjugation	FITC
Purification	Affinity Purified
Dilution Range	WB: 1:500 DB: 1:10, 000 ELISA: 1:10, 000
Formulation	
Isotype	IgG
Storage Instruction	Store at -20°C for long term storage. Avoid freeze-thaw cycles.

TARGET INFORMATION

Gene ID	1238
Gene Symbol	ACKR2
Uniprot ID	ACKR2_HUMAN
Immunogen	Synthetic peptide taken within amino acid region 200-300 on ACRD6 protein.
Immunogen Region	200-300
Specificity	
Immunogen Sequence	



Western blot with Anti-ACKR2 Antibody (FITC) (STJ500033) with peptide on at 1:500 dilution in buffer.

This product is suitable for in-vitro studies under the RESEARCH USE ONLY [RUO] licence. This product must not be used as for diagnostic or other medical purposes.
St John's Laboratory Ltd, Knowledge Dock Business Centre, University Way, London, E16 2RD | Tel: 0208 223 3081