

Anti-Atypical Chemokine Receptor D6 antibody (300-378) (STJ500031)

STJ500031

GENERAL INFORMATION

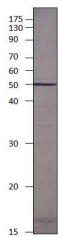
Product Type	Primary antibodies
Short Description	Rabbit polyclonal antibody anti-Atypical Chemokine Receptor D6 (300-378) is suitable for use in ELISA and Western Blot research applications.
Applications	ELISA, WB
Host/Source	Rabbit
Reactivity	Mouse, Rat

PRODUCT PROPERTIES

Clonality	Polyclonal
Clone ID	
Concentration	0.55-0.75 µg/µl
Conjugation	Unconjugated
Purification	Affinity Purified
Dilution Range	WB: 1:500 DB: 1:10, 000 ELISA: 1:10, 000 IP: 1:200 IHC: 1:50-1:150
Formulation	
Isotype	IgG
Storage Instruction	Store at -20°C for long term storage. Avoid freeze-thaw cycles.

TARGET INFORMATION

Gene ID	59289
Gene Symbol	Ackr2
Uniprot ID	ACKR2_MOUSE
Immunogen	Synthetic peptide taken within amino acid region 300-378 mouse Atypical chemokine receptor 2 protein.
Immunogen Region	300-378
Specificity	
Immunogen Sequence	



Western blot with Anti-Atypical Chemokine Receptor D6 Antibody (STJ500031) with peptide on at 1:500 dilution in buffer.