

Anti-KHDRBS2 antibody (C-Term) (STJ29933)

STJ29933

GENERAL INFORMATION

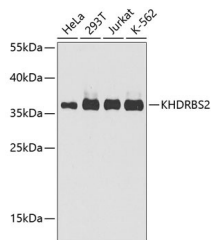
Product Type	Primary antibodies
Short Description	Rabbit polyclonal antibody anti-KHDRBS2 (C-Term) is suitable for use in Western Blot and Immunohistochemistry.
Applications	WB, IHC
Host/Source	Rabbit
Reactivity	Human, Mouse

PRODUCT PROPERTIES

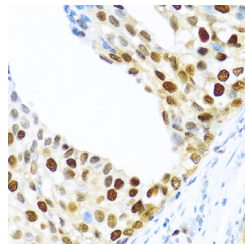
Clonality	Polyclonal
Clone ID	
Concentration	
Conjugation	Unconjugated
Purification	Affinity purification
Dilution Range	WB 1:500-1:1000 IHC 1:100-1:200
Formulation	PBS containing 0.02% Sodium Azide, 50% Glycerol, pH7.3.
Isotype	IgG
Storage Instruction	Store in a freezer at -20°C and avoid freeze-thaw cycles.

TARGET INFORMATION

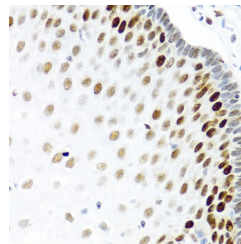
Gene ID	202559
Gene Symbol	KHDRBS2
Uniprot ID	KHDR2_HUMAN
Immunogen	A synthetic peptide corresponding to a sequence within amino acids 200 to the C-terminus of human KHDRBS2 (NP_689901.2).
Immunogen Region	C-Term
Specificity	
Immunogen Sequence	



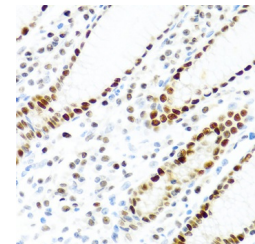
Western blot analysis of extracts of various cell lines, using KHDRBS2 antibody (STJ29933) at 1:1000 dilution. Secondary antibody: HRP Goat Anti-rabbit IgG (H+L) at 1:10000 dilution. Lysates/proteins: 25ug per lane. Blocking buffer: 3% nonfat dry milk in TBST. Detection: ECL Enhanced Kit. Exposure time: 30s.



Immunohistochemistry of paraffin-embedded human prostate cancer using KHDRBS2 antibody (STJ29933) at dilution of 1:100 (40x lens).



Immunohistochemistry of paraffin-embedded human esophagus using KHDRBS2 antibody (STJ29933) at dilution of 1:100 (40x lens).



Immunohistochemistry of paraffin-embedded human stomach using KHDRBS2 antibody (STJ29933) at dilution of 1:100 (40x lens).