

## Anti-KHDRBS1 antibody (C-Term) (STJ29932)

STJ29932

### GENERAL INFORMATION

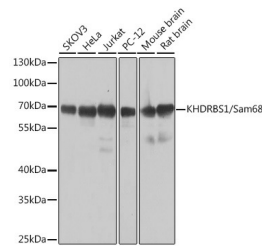
<b>Product Type</b>	Primary antibodies
<b>Short Description</b>	Rabbit polyclonal antibody anti-KHDRBS1 (C-Term) is suitable for use in Western Blot, Immunohistochemistry and Immunofluorescence.
<b>Applications</b>	WB, IHC, IF
<b>Host/Source</b>	Rabbit
<b>Reactivity</b>	Human, Mouse, Rat

### PRODUCT PROPERTIES

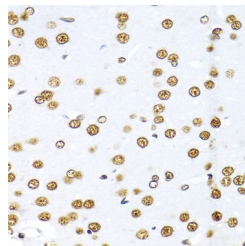
<b>Clonality</b>	Polyclonal
<b>Clone ID</b>	
<b>Concentration</b>	
<b>Conjugation</b>	Unconjugated
<b>Purification</b>	Affinity purification
<b>Dilution Range</b>	WB 1:500-1:2000 IHC 1:100-1:200 IF 1:50-1:200
<b>Formulation</b>	PBS containing 0.02% Sodium Azide, 50% Glycerol, pH7.3.
<b>Isotype</b>	IgG
<b>Storage Instruction</b>	Store in a freezer at -20°C and avoid freeze-thaw cycles.

### TARGET INFORMATION

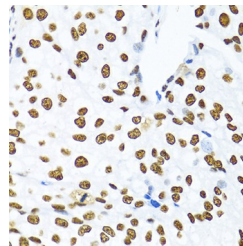
<b>Gene ID</b>	10657
<b>Gene Symbol</b>	KHDRBS1
<b>Uniprot ID</b>	KHDR1_HUMAN
<b>Immunogen</b>	A synthetic peptide corresponding to a sequence within amino acids 300 to the C-terminus of human KHDRBS1/Sam68 (NP_006550.1).
<b>Immunogen Region</b>	C-Term
<b>Specificity</b>	
<b>Immunogen Sequence</b>	



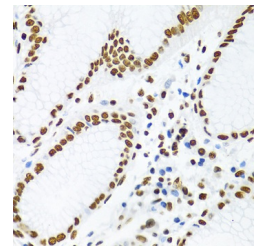
Western blot analysis of extracts of various cell lines, using KHDRBS1/Sam68 antibody (STJ29932) at 1:1000 dilution. Secondary antibody: HRP Goat Anti-rabbit IgG (H+L) at 1:10000 dilution. Lysates/proteins: 25ug per lane. Blocking buffer: 3% nonfat dry milk in TBST. Detection: ECL Basic Kit. Exposure time: 10s.



Immunohistochemistry of paraffin-embedded rat brain using KHDRBS1/Sam68 antibody (STJ29932) at dilution of 1:100 (40x lens).



Immunohistochemistry of paraffin-embedded human prostate cancer using KHDRBS1/Sam68 antibody (STJ29932) at dilution of 1:100 (40x lens).



Immunohistochemistry of paraffin-embedded human stomach using KHDRBS1/Sam68 antibody (STJ29932) at dilution of 1:100 (40x lens).