

Anti-NOTCH2 antibody (2242-2471) (STJ29808)

STJ29808

GENERAL INFORMATION

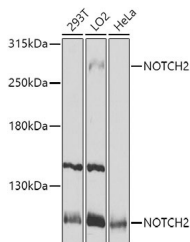
Product Type	Primary antibodies
Short Description	Rabbit polyclonal antibody anti-NOTCH2 (2242-2471) is suitable for use in Western Blot, Immunohistochemistry and Immunofluorescence.
Applications	WB, IHC, IF
Host/Source	Rabbit
Reactivity	Human, Mouse, Rat

PRODUCT PROPERTIES

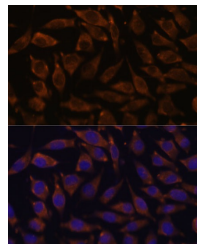
Clonality	Polyclonal
Clone ID	
Concentration	
Conjugation	Unconjugated
Purification	Affinity purification
Dilution Range	WB 1:500-1:2000 IHC 1:100-1:200 IF 1:50-1:200
Formulation	PBS containing 0.02% Sodium Azide, 50% Glycerol, pH7.3.
Isotype	IgG
Storage Instruction	Store in a freezer at -20°C and avoid freeze-thaw cycles.

TARGET INFORMATION

Gene ID	4853
Gene Symbol	NOTCH2
Uniprot ID	NOTC2_HUMAN
Immunogen	Recombinant fusion protein containing a sequence corresponding to amino acids 2242-2471 of human NOTCH2 (NP_077719.2).
Immunogen Region	2242-2471
Specificity	
Immunogen Sequence	



Western blot analysis of extracts of various cell lines, using NOTCH2 antibody (STJ29808) at 1:1000 dilution. Secondary antibody: HRP Goat Anti-rabbit IgG (H+L) at 1:10000 dilution. Lysates/proteins: 25µg per lane. Blocking buffer: 3% nonfat dry milk in TBST. Detection: ECL Basic Kit. Exposure time: 5s.



Immunofluorescence analysis of L929 cells using NOTCH2 antibody (STJ29808) at dilution of 1:100. Blue: DAPI for nuclear staining.