

Anti-EPAS1 antibody (588-870) (STJ29691)

STJ29691

GENERAL INFORMATION

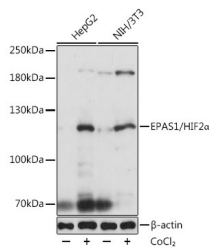
Product Type	Primary antibodies
Short Description	Rabbit polyclonal antibody anti-EPAS1/HIF2 Alpha (588-870) is suitable for use in Western Blot, Immunohistochemistry and Immunofluorescence.
Applications	WB, IHC, IF
Host/Source	Rabbit
Reactivity	Human, Mouse, Rat

PRODUCT PROPERTIES

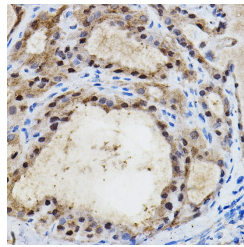
Clonality	Polyclonal
Clone ID	
Concentration	
Conjugation	Unconjugated
Purification	Affinity purification
Dilution Range	WB 1:500-1:2000 IHC 1:50-1:200 IF 1:50-1:100
Formulation	PBS containing 0.02% Sodium Azide, 50% Glycerol, pH7.3.
Isotype	IgG
Storage Instruction	Store in a freezer at -20°C and avoid freeze-thaw cycles.

TARGET INFORMATION

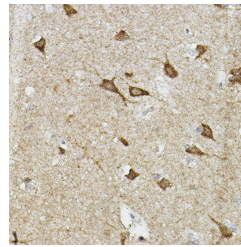
Gene ID	2034
Gene Symbol	EPAS1
Uniprot ID	EPAS1_HUMAN
Immunogen	Recombinant fusion protein containing a sequence corresponding to amino acids 588-870 of human EPAS1/HIF2 Alpha (NP_001421.2).
Immunogen Region	588-870
Specificity	
Immunogen Sequence	



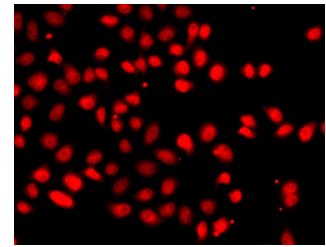
Western blot analysis of extracts of various cell lines, using EPAS1/HIF2 Alpha antibody (STJ29691) at 1:1000 dilution. Secondary antibody: HRP Goat Anti-rabbit IgG (H+L) at 1:10000 dilution. Lysates/proteins: 25ug per lane. Blocking buffer: 3% nonfat dry milk in TBST. Detection: ECL Basic Kit. Exposure time: 1s.



Immunohistochemistry of paraffin-embedded human thyroid cancer using EPAS1/HIF2 Alpha rabbit polyclonal antibody (STJ29691) at dilution of 1:100 (40x lens).



Immunohistochemistry of paraffin-embedded human brain using EPAS1/HIF2 Alpha rabbit polyclonal antibody (STJ29691) at dilution of 1:100 (40x lens).



Immunofluorescence analysis of A549 cells using EPAS1/HIF2 Alpha antibody (STJ29691).