

Anti-SUMO4 antibody (1-95) (STJ29653)

STJ29653

GENERAL INFORMATION

Product Type	Primary antibodies
Short Description	Rabbit polyclonal antibody anti-SUMO4 (1-95) is suitable for use in Western Blot and Immunofluorescence.
Applications	WB, IF
Host/Source	Rabbit
Reactivity	Human, Mouse, Rat

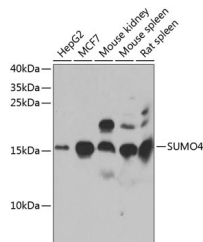
PRODUCT PROPERTIES

Clonality	Polyclonal
Clone ID	
Concentration	
Conjugation	Unconjugated
Purification	Affinity purification
Dilution Range	WB 1:500-1:2000 IF 1:50-1:200
Formulation	PBS containing 0.02% Sodium Azide, 50% Glycerol, pH7.3.
Isotype	IgG
Storage Instruction	Store in a freezer at -20°C and avoid freeze-thaw cycles.

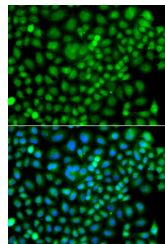
TARGET INFORMATION

Gene ID	387082
Gene Symbol	SUMO4
Uniprot ID	SUMO4_HUMAN
Immunogen	Recombinant fusion protein containing a sequence corresponding to amino acids 1-95 of human SUMO4 (NP_001002255.1).

Immunogen Region
1-95
Specificity
Immunogen
Sequence



Western blot analysis of extracts of various cell lines, using SUMO4 antibody (STJ29653) at 1:1000 dilution.
 _Secondary antibody: HRP Goat Anti-rabbit IgG (H+L) at 1:10000 dilution. _Lysates/proteins: 25ug per lane.
 _Blocking buffer: 3% nonfat dry milk in TBST.
 _Detection: ECL Enhanced Kit. _Exposure time: 40s.



Immunofluorescence analysis of A549 cells using SUMO4 antibody (STJ29653). Blue: DAPI for nuclear staining.

This product is suitable for in-vitro studies under the RESEARCH USE ONLY [RUO] licence. This product must not be used as for diagnostic or other medical purposes.
 St John's Laboratory Ltd, Knowledge Dock Business Centre, University Way, London, E16 2RD | Tel: 0208 223 3081