

Anti-NAA60 antibody (1-242) (STJ29523)

STJ29523

GENERAL INFORMATION

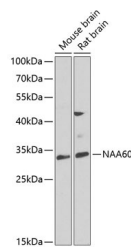
Product Type	Primary antibodies
Short Description	Rabbit polyclonal antibody anti-NAA60 (1-242) is suitable for use in Western Blot, Immunohistochemistry and Immunofluorescence.
Applications	WB, IHC, IF
Host/Source	Rabbit
Reactivity	Human, Mouse, Rat

PRODUCT PROPERTIES

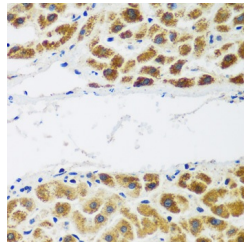
Clonality	Polyclonal
Clone ID	
Concentration	
Conjugation	Unconjugated
Purification	Affinity purification
Dilution Range	WB 1:500-1:2000 IHC 1:50-1:200 IF 1:50-1:200
Formulation	PBS containing 0.02% Sodium Azide, 50% Glycerol, pH7.3.
Isotype	IgG
Storage Instruction	Store in a freezer at -20°C and avoid freeze-thaw cycles.

TARGET INFORMATION

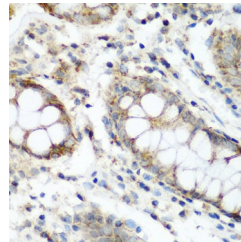
Gene ID	79903
Gene Symbol	NAA60
Uniprot ID	NAA60_HUMAN
Immunogen	Recombinant fusion protein containing a sequence corresponding to amino acids 1-242 of human NAA60 (NP_079121.1).
Immunogen Region	1-242
Specificity	
Immunogen Sequence	



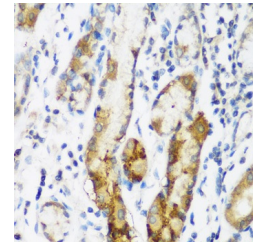
Western blot analysis of extracts of various cell lines, using NAA60 antibody (STJ29523) at 1:1000 dilution. Secondary antibody: HRP Goat Anti-rabbit IgG (H+L) at 1:10000 dilution. Lysates/proteins: 25ug per lane. Blocking buffer: 3% nonfat dry milk in TBST. Detection: ECL Enhanced Kit. Exposure time: 90s.



Immunohistochemistry of paraffin-embedded human liver cancer using NAA60 antibody (STJ29523) at dilution of 1:200 (40x lens).



Immunohistochemistry of paraffin-embedded human colon using NAA60 antibody (STJ29523) at dilution of 1:200 (40x lens).



Immunohistochemistry of paraffin-embedded human gastric using NAA60 antibody (STJ29523) at dilution of 1:200 (40x lens).