

Anti-CSR2BP antibody (523-782) (STJ29517)

STJ29517

GENERAL INFORMATION

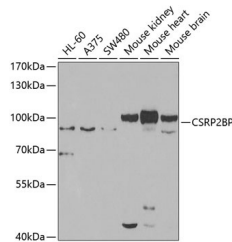
Product Type	Primary antibodies
Short Description	Rabbit polyclonal antibody anti-CSR2BP (523-782) is suitable for use in Western Blot, Immunohistochemistry and Immunofluorescence.
Applications	WB, IHC, IF
Host/Source	Rabbit
Reactivity	Human, Mouse

PRODUCT PROPERTIES

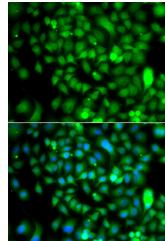
Clonality	Polyclonal
Clone ID	
Concentration	
Conjugation	Unconjugated
Purification	Affinity purification
Dilution Range	WB 1:500-1:2000 IHC 1:50-1:200 IF 1:50-1:200
Formulation	PBS containing 0.02% Sodium Azide, 50% Glycerol, pH7.3.
Isotype	IgG
Storage Instruction	Store in a freezer at -20°C and avoid freeze-thaw cycles.

TARGET INFORMATION

Gene ID	57325
Gene Symbol	KAT14
Uniprot ID	CSR2B_HUMAN
Immunogen	Recombinant fusion protein containing a sequence corresponding to amino acids 523-782 of human CSR2BP (NP_065397.3).
Immunogen Region	523-782
Specificity	
Immunogen Sequence	



Western blot analysis of extracts of various cell lines, using CSR2BP antibody (STJ29517) at 1:1000 dilution. Secondary antibody: HRP Goat Anti-rabbit IgG (H+L) at 1:10000 dilution. Lysates/proteins: 25ug per lane. Blocking buffer: 3% nonfat dry milk in TBST. Detection: ECL Enhanced Kit. Exposure time: 90s.



Immunofluorescence analysis of A549 cells using CSR2BP antibody (STJ29517). Blue: DAPI for nuclear staining.