

Anti-GCM1 antibody (207-436) (STJ29421)

STJ29421

GENERAL INFORMATION

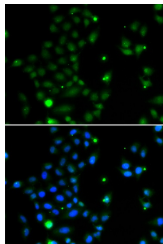
Product Type	Primary antibodies
Short Description	Rabbit polyclonal antibody anti-GCM1 (207-436) is suitable for use in Western Blot and Immunofluorescence.
Applications	WB, IF
Host/Source	Rabbit
Reactivity	Human

PRODUCT PROPERTIES

Clonality	Polyclonal
Clone ID	
Concentration	
Conjugation	Unconjugated
Purification	Affinity purification
Dilution Range	WB 1:500-1:2000 IF 1:50-1:100
Formulation	PBS containing 0.02% Sodium Azide, 50% Glycerol, pH7.3.
Isotype	IgG
Storage Instruction	Store in a freezer at -20°C and avoid freeze-thaw cycles.

TARGET INFORMATION

Gene ID	8521
Gene Symbol	GCM1
Uniprot ID	GCM1_HUMAN
Immunogen	Recombinant fusion protein containing a sequence corresponding to amino acids 207-436 of human GCM1 (NP_003634.2).
Immunogen Region	207-436
Specificity	
Immunogen Sequence	



Immunofluorescence analysis of MCF-7 cells using GCM1 antibody (STJ29421). Blue: DAPI for nuclear staining.

This product is suitable for in-vitro studies under the RESEARCH USE ONLY [RUO] licence. This product must not be used as for diagnostic or other medical purposes.
St John's Laboratory Ltd, Knowledge Dock Business Centre, University Way, London, E16 2RD | Tel: 0208 223 3081