

Anti-C10orf32 antibody (1-105) (STJ29415)

STJ29415

GENERAL INFORMATION

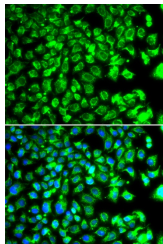
Product Type	Primary antibodies
Short Description	Rabbit polyclonal antibody anti-C10orf32 (1-105) is suitable for use in Western Blot and Immunofluorescence.
Applications	WB, IF
Host/Source	Rabbit
Reactivity	Human

PRODUCT PROPERTIES

Clonality	Polyclonal
Clone ID	
Concentration	
Conjugation	Unconjugated
Purification	Affinity purification
Dilution Range	WB 1:500-1:2000 IF 1:50-1:100
Formulation	PBS containing 0.02% Sodium Azide, 50% Glycerol, pH7.3.
Isotype	IgG
Storage Instruction	Store in a freezer at -20°C and avoid freeze-thaw cycles.

TARGET INFORMATION

Gene ID	119032
Gene Symbol	BORCS7
Uniprot ID	BORC7_HUMAN
Immunogen	Recombinant fusion protein containing a sequence corresponding to amino acids 1-105 of human C10orf32 (NP_653192.2).
Immunogen Region	1-105
Specificity	
Immunogen Sequence	



Immunofluorescence analysis of MCF-7 cells using C10orf32 antibody (STJ29415). Blue: DAPI for nuclear staining.

This product is suitable for in-vitro studies under the RESEARCH USE ONLY [RUO] licence. This product must not be used as for diagnostic or other medical purposes.
St John's Laboratory Ltd, Knowledge Dock Business Centre, University Way, London, E16 2RD | Tel: 0208 223 3081