

Anti-AKT1 antibody (50-150) (STJ29409)

STJ29409

GENERAL INFORMATION

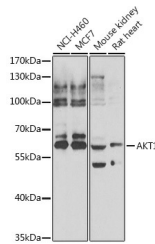
Product Type	Primary antibodies
Short Description	Rabbit polyclonal antibody anti-AKT1 (50-150) is suitable for use in Western Blot and Immunoprecipitation.
Applications	WB, IP
Host/Source	Rabbit
Reactivity	Human, Mouse, Rat

PRODUCT PROPERTIES

Clonality	Polyclonal
Clone ID	
Concentration	
Conjugation	Unconjugated
Purification	Affinity purification
Dilution Range	WB 1:500-1:2000 IP 1:20-1:50
Formulation	PBS containing 0.02% Sodium Azide, 50% Glycerol, pH7.3.
Isotype	IgG
Storage Instruction	Store in a freezer at -20°C and avoid freeze-thaw cycles.

TARGET INFORMATION

Gene ID	207
Gene Symbol	AKT1
Uniprot ID	AKT1_HUMAN
Immunogen	A synthetic peptide corresponding to a sequence within amino acids 50-150 of human AKT1 (NP_005154.2).
Immunogen Region	50-150
Specificity	
Immunogen Sequence	



Western blot analysis of extracts of various cell lines, using AKT1 antibody (STJ29409). Secondary antibody: HRP Goat Anti-rabbit IgG (H+L) at 1:10000 dilution. Lysates/proteins: 25ug per lane. Blocking buffer: 3% nonfat dry milk in TBST. Detection: ECL Enhanced Kit. Exposure time: 30s.

This product is suitable for in-vitro studies under the RESEARCH USE ONLY [RUO] licence. This product must not be used as for diagnostic or other medical purposes.
St John's Laboratory Ltd, Knowledge Dock Business Centre, University Way, London, E16 2RD | Tel: 0208 223 3081