

Anti-LMO4 antibody (1-165) (STJ29408)

STJ29408

GENERAL INFORMATION

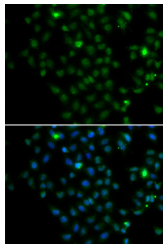
| | |
|--------------------------|------------------------------------------------------------------------------------------------------------------|
| Product Type | Primary antibodies |
| Short Description | Rabbit polyclonal antibody anti-LMO4 (1-165) is suitable for use in Immunohistochemistry and Immunofluorescence. |
| Applications | IHC, IF |
| Host/Source | Rabbit |
| Reactivity | Human, Mouse, Rat |

PRODUCT PROPERTIES

| | |
|----------------------------|-----------------------------------------------------------|
| Clonality | Polyclonal |
| Clone ID | |
| Concentration | |
| Conjugation | Unconjugated |
| Purification | Affinity purification |
| Dilution Range | IHC 1:50-1:200 IF 1:50-1:100 |
| Formulation | PBS containing 0.02% Sodium Azide, 50% Glycerol, pH7.3. |
| Isotype | IgG |
| Storage Instruction | Store in a freezer at -20°C and avoid freeze-thaw cycles. |

TARGET INFORMATION

| | |
|---------------------------|------------------------------------------------------------------------------------------------------------------|
| Gene ID | 8543 |
| Gene Symbol | LMO4 |
| Uniprot ID | LMO4_HUMAN |
| Immunogen | Recombinant fusion protein containing a sequence corresponding to amino acids 1-165 of human LMO4 (NP_006760.1). |
| Immunogen Region | 1-165 |
| Specificity | |
| Immunogen Sequence | |



Immunofluorescence analysis of MCF-7 cells using LMO4 antibody (STJ29408). Blue: DAPI for nuclear staining.

This product is suitable for in-vitro studies under the RESEARCH USE ONLY [RUO] licence. This product must not be used as for diagnostic or other medical purposes.
St John's Laboratory Ltd, Knowledge Dock Business Centre, University Way, London, E16 2RD | Tel: 0208 223 3081