

## Anti-Pan-Phospho-PKC Gamma-T514 antibody (STJ29379)

STJ29379

### GENERAL INFORMATION

<b>Product Type</b>	Primary antibodies
<b>Short Description</b>	Rabbit polyclonal antibody anti-Pan-Phospho-PKC (pan) (gamma)-T514 is suitable for use in Western Blot.
<b>Applications</b>	WB
<b>Host/Source</b>	Rabbit
<b>Reactivity</b>	Human, Mouse, Rat

### PRODUCT PROPERTIES

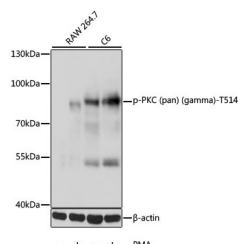
<b>Clonality</b>	Polyclonal
<b>Clone ID</b>	
<b>Concentration</b>	
<b>Conjugation</b>	Unconjugated
<b>Purification</b>	Affinity purification
<b>Dilution Range</b>	WB 1:500-1:2000
<b>Formulation</b>	PBS containing 0.02% Sodium Azide, 50% Glycerol, pH7.3.
<b>Isotype</b>	IgG
<b>Storage Instruction</b>	Store in a freezer at -20°C and avoid freeze-thaw cycles.

### TARGET INFORMATION

**Gene ID** [5588](#)  
[5578](#)  
[5580](#)  
[PRKCQ](#)  
[PRKCA](#)  
[KPCT\\_HUMAN](#)  
[KPCA\\_HUMAN](#)  
[KPCD\\_HUMAN](#)

**Immunogen** <  
 A phospho specific peptide corresponding to residues surrounding T514 of human PKC (pan) (gamma)

**Immunogen Region**  
**Specificity**  
**Immunogen Sequence**



Western blot analysis of extracts of various cell lines, using Phospho-PKC (pan) (gamma)-T514 antibody (STJ29379) at 1:1000 dilution. RAW 264.7 cells were treated by PMA (200 nM) for 30 minutes. C6 cells were treated by PMA/TPA (200nM) for 30 minutes after serum-starvation overnight. Secondary antibody: HRP Goat Anti-rabbit IgG (H+L) at 1:10000 dilution. Lysates/proteins: 25ug per lane. Blocking buffer: 3% BSA. Detection: ECL Basic Kit. Exposure time: 10s.

This product is suitable for in-vitro studies under the RESEARCH USE ONLY [RUO] licence. This product must not be used as for diagnostic or other medical purposes.  
 St John's Laboratory Ltd, Knowledge Dock Business Centre, University Way, London, E16 2RD | Tel: 0208 223 3081