

Anti-Phospho-BCR-Y177 antibody (STJ29372)

STJ29372

GENERAL INFORMATION

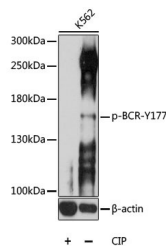
Product Type	Primary antibodies
Short Description	Rabbit polyclonal antibody anti-Phospho-BCR-Y177 is suitable for use in Western Blot.
Applications	WB
Host/Source	Rabbit
Reactivity	Human, Mouse

PRODUCT PROPERTIES

Clonality	Polyclonal
Clone ID	
Concentration	
Conjugation	Unconjugated
Purification	Affinity purification
Dilution Range	WB 1:500-1:2000
Formulation	PBS containing 0.02% Sodium Azide, 50% Glycerol, pH7.3.
Isotype	IgG
Storage Instruction	Store in a freezer at -20°C and avoid freeze-thaw cycles.

TARGET INFORMATION

Gene ID	613
Gene Symbol	BCR
Uniprot ID	BCR_HUMAN
Immunogen	A synthetic phosphorylated peptide around Y177 of human BCR (NP_004318.3).
Immunogen Region	
Specificity	
Immunogen Sequence	



Western blot analysis of extracts of K562 cells, using Phospho-BCR-Y177 antibody (STJ29372) at 1:1000 dilution. K562 cell lysate were treated by CIP (20ul CIP for each 400ul cell lysate) at 37 °C for 1 hour. Secondary antibody: HRP Goat Anti-rabbit IgG (H+L) at 1:10000 dilution. Lysates/proteins: 25ug per lane. Blocking buffer: 3% BSA. Detection: ECL Basic Kit. Exposure time: 90s.

This product is suitable for in-vitro studies under the RESEARCH USE ONLY [RUO] licence. This product must not be used as for diagnostic or other medical purposes.
 St John's Laboratory Ltd, Knowledge Dock Business Centre, University Way, London, E16 2RD | Tel: 0208 223 3081