

Anti-Phospho-CHEK2-T68 antibody (STJ29356)

STJ29356

GENERAL INFORMATION

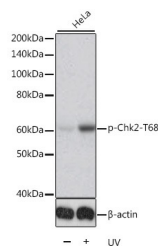
Product Type	Primary antibodies
Short Description	Rabbit polyclonal antibody anti-Phospho-Chk2-T68 is suitable for use in Western Blot.
Applications	WB
Host/Source	Rabbit
Reactivity	Human

PRODUCT PROPERTIES

Clonality	Polyclonal
Clone ID	
Concentration	
Conjugation	Unconjugated
Purification	Affinity purification
Dilution Range	WB 1:500-1:2000
Formulation	PBS containing 0.02% Sodium Azide, 50% Glycerol, pH7.3.
Isotype	IgG
Storage Instruction	Store in a freezer at -20°C and avoid freeze-thaw cycles.

TARGET INFORMATION

Gene ID	11200
Gene Symbol	CHEK2
Uniprot ID	CHK2_HUMAN
Immunogen	A synthetic phosphorylated peptide around T68 of human Chk2 (NP_009125.1).
Immunogen Region	
Specificity	
Immunogen Sequence	



Western blot analysis of extracts of HeLa cells, using Phospho-Chk2-T68 antibody (STJ29356). HeLa cells were treated by UV for 15-30 minutes. Secondary antibody: HRP Goat Anti-rabbit IgG (H+L) at 1:10000 dilution. Lysates/proteins: 25µg per lane. Blocking buffer: 3% BSA.

This product is suitable for in-vitro studies under the RESEARCH USE ONLY [RUO] licence. This product must not be used as for diagnostic or other medical purposes.
 St John's Laboratory Ltd, Knowledge Dock Business Centre, University Way, London, E16 2RD | Tel: 0208 223 3081