

Anti-Phospho-GSK3A-S21 antibody (STJ29348)

STJ29348

GENERAL INFORMATION

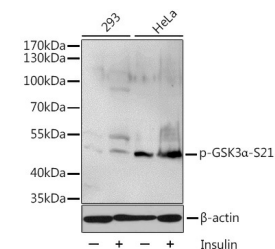
Product Type	Primary antibodies
Short Description	Rabbit polyclonal antibody anti-Phospho-GSK3 Alpha-S21 is suitable for use in Western Blot and Immunoprecipitation.
Applications	WB, IP
Host/Source	Rabbit
Reactivity	Human

PRODUCT PROPERTIES

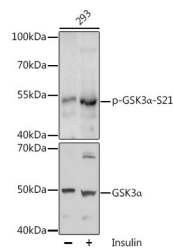
Clonality	Polyclonal
Clone ID	
Concentration	
Conjugation	Unconjugated
Purification	Affinity purification
Dilution Range	WB 1:500-1:2000 IP 1:50-1:100
Formulation	PBS containing 0.02% Sodium Azide, 50% Glycerol, pH7.3.
Isotype	IgG
Storage Instruction	Store in a freezer at -20°C and avoid freeze-thaw cycles.

TARGET INFORMATION

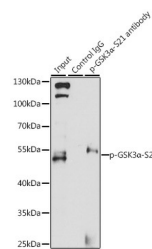
Gene ID	2931
Gene Symbol	GSK3A
Uniprot ID	GSK3A_HUMAN
Immunogen	A synthetic phosphorylated peptide around S21 of human GSK3 Alpha (NP_063937.2).
Immunogen Region	
Specificity	
Immunogen Sequence	



Western blot analysis of extracts of 293 and HeLa cells, using Phospho-GSK3 Alpha-S21 antibody (STJ29348) at 1:1000 dilution. 293 cells were treated by Insulin (100nM) for 10 minutes after serum-starvation overnight. HeLa cells were treated by Insulin (0.01U/mL) for 15 minutes after serum-starvation overnight. Secondary antibody: HRP Goat Anti-rabbit IgG (H+L) at 1:10000 dilution. Lysates/proteins: 25ug per lane. Blocking buffer: 3% BSA.



Western blot analysis of extracts of 293 cells, using Phospho-GSK3 Alpha-S21 antibody (STJ29348) at 1:1000 dilution or GSK3 Alpha antibody (STJ23877). 293 cells were treated by Insulin (100nM) for 10 minutes after serum-starvation overnight. Secondary antibody: HRP Goat Anti-rabbit IgG (H+L) at 1:10000 dilution. Lysates/proteins: 25ug per lane. Blocking buffer: 3% BSA.



Immunoprecipitation analysis of 200ug extracts of 293T cells, using 3 ug Phospho-GSK3 Alpha-S21 polyclonal antibody (STJ29348). Western blot was performed from the immunoprecipitate using Phospho-GSK3 Alpha-S21 polyclonal antibody (STJ29348) at a dilution of 1:1000. 293T cells were treated by Insulin (100 nM) at 37 °C for 10 minutes after serum-starvation overnight.

This product is suitable for in-vitro studies under the RESEARCH USE ONLY [RUO] licence. This product must not be used as for diagnostic or other medical purposes.
St John's Laboratory Ltd, Knowledge Dock Business Centre, University Way, London, E16 2RD | Tel: 0208 223 3081