

Anti-Phospho-CTNNB1-S552 antibody (STJ29345)

STJ29345

GENERAL INFORMATION

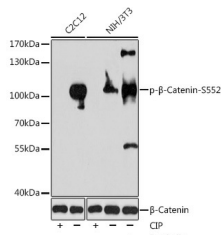
| | |
|--------------------------|--|
| Product Type | Primary antibodies |
| Short Description | Rabbit polyclonal antibody anti-Phospho-Beta-Catenin-S552 is suitable for use in Western Blot. |
| Applications | WB |
| Host/Source | Rabbit |
| Reactivity | Human, Mouse, Rat |

PRODUCT PROPERTIES

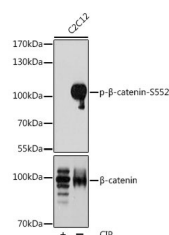
| | |
|----------------------------|---|
| Clonality | Polyclonal |
| Clone ID | |
| Concentration | |
| Conjugation | Unconjugated |
| Purification | Affinity purification |
| Dilution Range | WB 1:500-1:2000 |
| Formulation | PBS containing 0.02% Sodium Azide, 50% Glycerol, pH7.3. |
| Isotype | IgG |
| Storage Instruction | Store in a freezer at -20°C and avoid freeze-thaw cycles. |

TARGET INFORMATION

| | |
|---------------------------|--|
| Gene ID | 1499 |
| Gene Symbol | CTNNB1 |
| Uniprot ID | CTNB1_HUMAN |
| Immunogen | A synthetic phosphorylated peptide around S552 of human beta Catenin (NP_001091679). |
| Immunogen Region | |
| Specificity | |
| Immunogen Sequence | |



Western blot analysis of extracts of various cell lines, using Phospho-beta Catenin-S552 antibody (STJ29345) at 1:1000 dilution. C2C12 cell lysates were treated by CIP at 37°C for 1 hour. NIH/3T3 cells were treated by Forskolin (30μM) for 30 minutes after serum-starvation overnight or treated by CIP at 37°C for 1 hour. Secondary antibody: HRP Goat Anti-rabbit IgG (H+L) at 1:10000 dilution. Lysates/proteins: 25ug per lane. Blocking buffer: 3% BSA. Detection: ECL Enhanced Kit. Exposure time: 30s.



Western blot analysis of extracts of C2C12 cells, using Phospho-Beta-Catenin-S552 polyclonal antibody (STJ29345) at 1:1000 dilution or Beta-Catenin antibody (STJ293402). C2C12 cell lysates were treated by CIP at 37°C for 1 hour. Secondary antibody: HRP Goat Anti-rabbit IgG (H+L) at 1:10000 dilution. Lysates/proteins: 25ug per lane. Blocking buffer: 3% BSA. Detection: ECL Enhanced Kit. Exposure time: 30s.

This product is suitable for in-vitro studies under the RESEARCH USE ONLY [RUO] licence. This product must not be used as for diagnostic or other medical purposes.
 St John's Laboratory Ltd, Knowledge Dock Business Centre, University Way, London, E16 2RD | Tel: 0208 223 3081