

Anti-Phospho-ALOX5-S271 antibody (STJ29339)

STJ29339

GENERAL INFORMATION

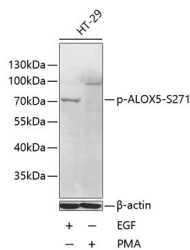
Product Type	Primary antibodies
Short Description	Rabbit polyclonal antibody anti-Phospho-ALOX5-S271 is suitable for use in Western Blot.
Applications	WB
Host/Source	Rabbit
Reactivity	Human

PRODUCT PROPERTIES

Clonality	Polyclonal
Clone ID	
Concentration	
Conjugation	Unconjugated
Purification	Affinity purification
Dilution Range	WB 1:500-1:2000
Formulation	PBS containing 0.02% Sodium Azide, 50% Glycerol, pH7.3.
Isotype	IgG
Storage Instruction	Store in a freezer at -20°C and avoid freeze-thaw cycles.

TARGET INFORMATION

Gene ID	240
Gene Symbol	ALOX5
Uniprot ID	LOX5_HUMAN
Immunogen	A synthetic phosphorylated peptide around S271 of human ALOX5 (NP_000689.1).
Immunogen Region	
Specificity	
Immunogen Sequence	



Western blot analysis of extracts of HT-29 cells, using Phospho-ALOX5-S271 antibody (STJ29339) at 1:1000 dilution. HT-29 cells were treated by PMA/TPA (200nM). Secondary antibody: HRP Goat Anti-rabbit IgG (H+L) at 1:10000 dilution. Lysates/proteins: 25ug per lane. Blocking buffer: 3% BSA.