

Anti-GTF2H3 antibody (1-308) (STJ29268)

STJ29268

GENERAL INFORMATION

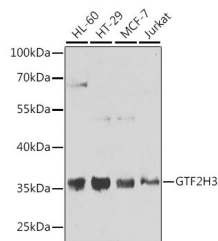
| | |
|--------------------------|---|
| Product Type | Primary antibodies |
| Short Description | Rabbit polyclonal antibody anti-GTF2H3 (1-308) is suitable for use in Western Blot, Immunofluorescence and Immunoprecipitation. |
| Applications | WB, IF, IP |
| Host/Source | Rabbit |
| Reactivity | Human, Mouse |

PRODUCT PROPERTIES

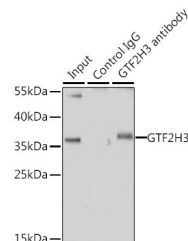
| | |
|----------------------------|---|
| Clonality | Polyclonal |
| Clone ID | |
| Concentration | |
| Conjugation | Unconjugated |
| Purification | Affinity purification |
| Dilution Range | WB 1:500-1:2000 IF 1:50-1:100 IP 1:50-1:200 |
| Formulation | PBS containing 0.02% Sodium Azide, 50% Glycerol, pH7.3. |
| Isotype | IgG |
| Storage Instruction | Store in a freezer at -20°C and avoid freeze-thaw cycles. |

TARGET INFORMATION

| | |
|---------------------------|--|
| Gene ID | 2967 |
| Gene Symbol | GTF2H3 |
| Uniprot ID | TF2H3_HUMAN |
| Immunogen | Recombinant fusion protein containing a sequence corresponding to amino acids 1-308 of human GTF2H3 (NP_001507.2). |
| Immunogen Region | 1-308 |
| Specificity | |
| Immunogen Sequence | |



Western blot analysis of extracts of various cell lines, using GTF2H3 antibody (STJ29268) at 1:1000 dilution. Secondary antibody: HRP Goat Anti-rabbit IgG (H+L) at 1:10000 dilution, lysates/proteins: 25µg per lane. Blocking buffer: 3% nonfat dry milk in TBST. Detection: ECL Basic Kit. Exposure time: 10s.



Immunoprecipitation analysis of 200µg extracts of HT-29 cells using 1µg GTF2H3 antibody (STJ29268). Western blot was performed from the immunoprecipitate using GTF2H3 antibody (STJ29268) at a dilution of 1:1000.

This product is suitable for in-vitro studies under the RESEARCH USE ONLY [RUO] licence. This product must not be used as for diagnostic or other medical purposes.
St John's Laboratory Ltd, Knowledge Dock Business Centre, University Way, London, E16 2RD | Tel: 0208 223 3081