

## Anti-GSTCD antibody (1-280) (STJ29267)

STJ29267

### GENERAL INFORMATION

|                          |   |
|--------------------------|---|
| <b>Product Type</b>      | Primary antibodies  |
| <b>Short Description</b> | Rabbit polyclonal antibody anti-GSTCD (1-280) is suitable for use in Western Blot and Immunofluorescence. |
| <b>Applications</b>      | WB, IF  |
| <b>Host/Source</b>       | Rabbit  |
| <b>Reactivity</b>        | Human   |

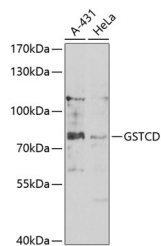
### PRODUCT PROPERTIES

|                            |   |
|----------------------------|---|
| <b>Clonality</b>           | Polyclonal  |
| <b>Clone ID</b>            |   |
| <b>Concentration</b>       |   |
| <b>Conjugation</b>         | Unconjugated  |
| <b>Purification</b>        | Affinity purification                                     |
| <b>Dilution Range</b>      | WB 1:500-1:2000<br>IF 1:50-1:100                          |
| <b>Formulation</b>         | PBS containing 0.02% Sodium Azide, 50% Glycerol, pH7.3.   |
| <b>Isotype</b>             | IgG   |
| <b>Storage Instruction</b> | Store in a freezer at -20°C and avoid freeze-thaw cycles. |

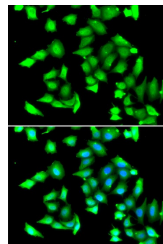
### TARGET INFORMATION

|                    |  |
|--------------------|--|
| <b>Gene ID</b>     | 79807  |
| <b>Gene Symbol</b> | GSTCD  |
| <b>Uniprot ID</b>  | GSTCD_HUMAN  |
| <b>Immunogen</b>   | Recombinant fusion protein containing a sequence corresponding to amino acids 1-280 of human GSTCD (NP_001026890.2). |

**Immunogen Region**  
1-280  
**Specificity**  
**Immunogen**  
**Sequence**



Western blot analysis of extracts of various cell lines, using GSTCD antibody (STJ29267) at 1:1000 dilution. Secondary antibody: HRP Goat Anti-rabbit IgG (H+L) at 1:10000 dilution. Lysates/proteins: 25ug per lane. Blocking buffer: 3% nonfat dry milk in TBST. Detection: ECL Basic Kit. Exposure time: 10s.



Immunofluorescence analysis of A549 cells using GSTCD antibody (STJ29267). Blue: DAPI for nuclear staining.

This product is suitable for in-vitro studies under the RESEARCH USE ONLY [RUO] licence. This product must not be used as for diagnostic or other medical purposes.  
St John's Laboratory Ltd, Knowledge Dock Business Centre, University Way, London, E16 2RD | Tel: 0208 223 3081