

Anti-ACTL6B antibody (1-280) (STJ29188)

STJ29188

GENERAL INFORMATION

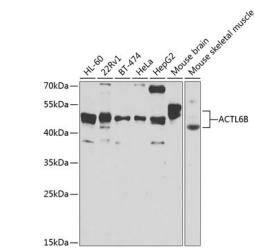
Product Type	Primary antibodies
Short Description	Rabbit polyclonal antibody anti-ACTL6B (1-280) is suitable for use in Western Blot, Immunohistochemistry and Immunofluorescence.
Applications	WB, IHC, IF
Host/Source	Rabbit
Reactivity	Human, Mouse, Rat

PRODUCT PROPERTIES

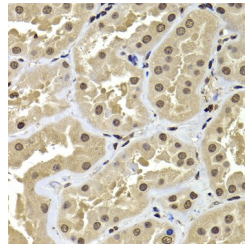
Clonality	Polyclonal
Clone ID	
Concentration	
Conjugation	Unconjugated
Purification	Affinity purification
Dilution Range	WB 1:500-1:2000 IHC 1:50-1:200 IF 1:50-1:100
Formulation	PBS containing 0.02% Sodium Azide, 50% Glycerol, pH7.3.
Isotype	IgG
Storage Instruction	Store in a freezer at -20°C and avoid freeze-thaw cycles.

TARGET INFORMATION

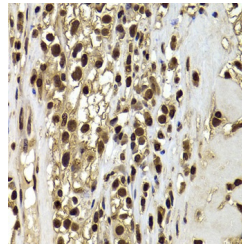
Gene ID	51412
Gene Symbol	ACTL6B
Uniprot ID	ACL6B_HUMAN
Immunogen	Recombinant fusion protein containing a sequence corresponding to amino acids 1-280 of human ACTL6B (NP_057272.1).
Immunogen Region	1-280
Specificity	
Immunogen Sequence	



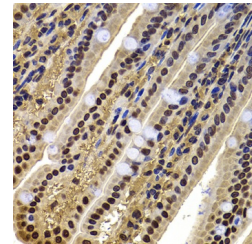
Western blot analysis of extracts of various cell lines, using ACTL6B antibody (STJ29188) at 1:1000 dilution. Secondary antibody: HRP Goat Anti-rabbit IgG (H+L) at 1:10000 dilution, lysates/proteins: 25µg per lane. Blocking buffer: 3% nonfat dry milk in TBST. Detection: ECL Basic Kit. Exposure time: 40s.



Immunohistochemistry of paraffin-embedded human kidney using ACTL6B antibody (STJ29188) at dilution of 1:100 (40x lens).



Immunohistochemistry of paraffin-embedded human kidney cancer using ACTL6B antibody (STJ29188) at dilution of 1:100 (40x lens).



Immunohistochemistry of paraffin-embedded mouse jejunum using ACTL6B antibody (STJ29188) at dilution of 1:100 (40x lens).