

## Anti-L3MBTL1 antibody (533-772) (STJ29170)

STJ29170

### GENERAL INFORMATION

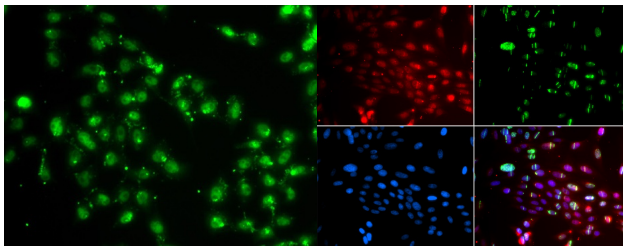
<b>Product Type</b>	Primary antibodies
<b>Short Description</b>	Rabbit polyclonal antibody anti-L3MBTL1 (533-772) is suitable for use in Immunofluorescence.
<b>Applications</b>	IF
<b>Host/Source</b>	Rabbit
<b>Reactivity</b>	Human

### PRODUCT PROPERTIES

<b>Clonality</b>	Polyclonal
<b>Clone ID</b>	
<b>Concentration</b>	
<b>Conjugation</b>	Unconjugated
<b>Purification</b>	Affinity purification
<b>Dilution Range</b>	IF 1:50-1:100
<b>Formulation</b>	PBS containing 0.02% Sodium Azide, 50% Glycerol, pH7.3.
<b>Isotype</b>	IgG
<b>Storage Instruction</b>	Store in a freezer at -20°C and avoid freeze-thaw cycles.

### TARGET INFORMATION

<b>Gene ID</b>	<a href="#">26013</a>
<b>Gene Symbol</b>	<a href="#">L3MBTL1</a>
<b>Uniprot ID</b>	<a href="#">LMBL1_HUMAN</a>
<b>Immunogen</b>	Recombinant fusion protein containing a sequence corresponding to amino acids 533-772 of human L3MBTL1 (NP_056293.4).
<b>Immunogen Region</b>	533-772
<b>Specificity</b>	
<b>Immunogen Sequence</b>	



Immunofluorescence analysis of A549 cells using L3MBTL1 antibody (STJ29170).

Immunofluorescence analysis of GFP-RNF168 transgenic U2OS cells using L3MBTL1 antibody (STJ29170). Green:GFP-RNF168 fusion protein expression for DNA damage marker. Blue:DAPI for nuclear staining. RNF168 (GFP) can be used to mark cells damaged by UV-A laser for they always gather around DNA damage region.

This product is suitable for in-vitro studies under the RESEARCH USE ONLY [RUO] licence. This product must not be used as for diagnostic or other medical purposes.  
 St John's Laboratory Ltd, Knowledge Dock Business Centre, University Way, London, E16 2RD | Tel: 0208 223 3081