

Anti-NSL1 antibody (1-281) (STJ29169)

STJ29169

GENERAL INFORMATION

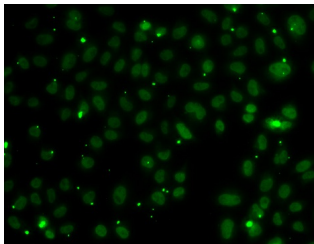
Product Type	Primary antibodies
Short Description	Rabbit polyclonal antibody anti-NSL1 (1-281) is suitable for use in Western Blot and Immunofluorescence.
Applications	WB, IF
Host/Source	Rabbit
Reactivity	Human

PRODUCT PROPERTIES

Clonality	Polyclonal
Clone ID	
Concentration	
Conjugation	Unconjugated
Purification	Affinity purification
Dilution Range	WB 1:500-1:2000 IF 1:50-1:100
Formulation	PBS containing 0.02% Sodium Azide, 50% Glycerol, pH7.3.
Isotype	IgG
Storage Instruction	Store in a freezer at -20°C and avoid freeze-thaw cycles.

TARGET INFORMATION

Gene ID	25936
Gene Symbol	NSL1
Uniprot ID	NSL1_HUMAN
Immunogen	Recombinant fusion protein containing a sequence corresponding to amino acids 1-281 of human NSL1 (NP_056286.3).
Immunogen Region	1-281
Specificity	
Immunogen Sequence	



Immunofluorescence analysis of A549 cells using NSL1 antibody (STJ29169).

This product is suitable for in-vitro studies under the RESEARCH USE ONLY [RUO] licence. This product must not be used as for diagnostic or other medical purposes.
St John's Laboratory Ltd, Knowledge Dock Business Centre, University Way, London, E16 2RD | Tel: 0208 223 3081