

Anti-MTF2 antibody (1-190) (STJ29157)

STJ29157

GENERAL INFORMATION

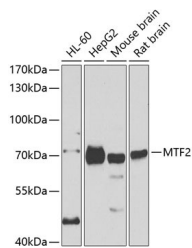
Product Type	Primary antibodies
Short Description	Rabbit polyclonal antibody anti-MTF2 (1-190) is suitable for use in Western Blot and Immunofluorescence.
Applications	WB, IF
Host/Source	Rabbit
Reactivity	Human, Mouse, Rat

PRODUCT PROPERTIES

Clonality	Polyclonal
Clone ID	
Concentration	
Conjugation	Unconjugated
Purification	Affinity purification
Dilution Range	WB 1:500-1:2000 IF 1:50-1:100
Formulation	PBS containing 0.02% Sodium Azide, 50% Glycerol, pH7.3.
Isotype	IgG
Storage Instruction	Store in a freezer at -20°C and avoid freeze-thaw cycles.

TARGET INFORMATION

Gene ID	22823
Gene Symbol	MTF2
Uniprot ID	MTF2_HUMAN
Immunogen	Recombinant fusion protein containing a sequence corresponding to amino acids 1-190 of human MTF2 (NP_001157864.1).
Immunogen Region	1-190
Specificity	
Immunogen Sequence	



Western blot analysis of extracts of various cell lines, using MTF2 antibody (STJ29157) at 1:1000 dilution. Secondary antibody: HRP Goat Anti-rabbit IgG (H+L) at 1:10000 dilution. Lysates/proteins: 25µg per lane. Blocking buffer: 3% nonfat dry milk in TBST.