

## Anti-SUB1 antibody (1-127) (STJ29150)

STJ29150

### GENERAL INFORMATION

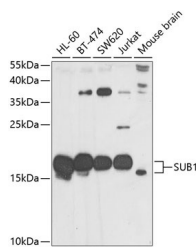
<b>Product Type</b>	Primary antibodies
<b>Short Description</b>	Rabbit polyclonal antibody anti-SUB1 (1-127) is suitable for use in Western Blot, Immunohistochemistry, Immunofluorescence and Immunoprecipitation.
<b>Applications</b>	WB, IHC, IF, IP
<b>Host/Source</b>	Rabbit
<b>Reactivity</b>	Human, Mouse

### PRODUCT PROPERTIES

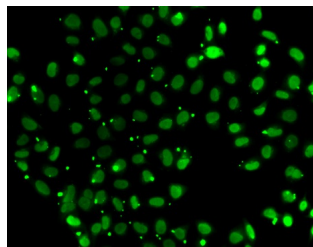
<b>Clonality</b>	Polyclonal
<b>Clone ID</b>	
<b>Concentration</b>	
<b>Conjugation</b>	Unconjugated
<b>Purification</b>	Affinity purification
<b>Dilution Range</b>	WB 1:500-1:2000 IHC 1:50-1:200 IF 1:50-1:100 IP 1:20-1:50
<b>Formulation</b>	PBS containing 0.02% Sodium Azide, 50% Glycerol, pH7.3.
<b>Isotype</b>	IgG
<b>Storage Instruction</b>	Store in a freezer at -20°C and avoid freeze-thaw cycles.

### TARGET INFORMATION

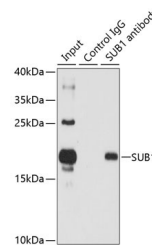
<b>Gene ID</b>	10923
<b>Gene Symbol</b>	SUB1
<b>Uniprot ID</b>	TCP4_HUMAN
<b>Immunogen</b>	Recombinant fusion protein containing a sequence corresponding to amino acids 1-127 of human SUB1 (NP_006704.3).
<b>Immunogen Region</b>	1-127
<b>Specificity</b>	
<b>Immunogen Sequence</b>	



Western blot analysis of extracts of various cell lines, using SUB1 antibody (STJ29150) at 1:1000 dilution. Secondary antibody: HRP Goat Anti-rabbit IgG (H+L) at 1:10000 dilution. Lysates/proteins: 25ug per lane. Blocking buffer: 3% nonfat dry milk in TBST. Detection: ECL Basic Kit. Exposure time: 30s.



Immunofluorescence analysis of A549 cells using SUB1 antibody (STJ29150).



Immunoprecipitation analysis of 150ug extracts of HL60 cells using SUB1 antibody (STJ29150). Western blot was performed from the immunoprecipitate using SUB1 antibody (STJ29150) at a dilution of 1:500.

This product is suitable for in-vitro studies under the RESEARCH USE ONLY [RUO] licence. This product must not be used as for diagnostic or other medical purposes.  
St John's Laboratory Ltd, Knowledge Dock Business Centre, University Way, London, E16 2RD | Tel: 0208 223 3081