

Anti-H2AFY antibody (123-372) (STJ29125)

STJ29125

GENERAL INFORMATION

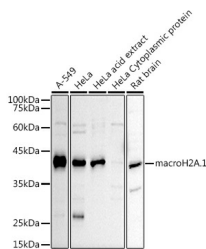
Product Type	Primary antibodies
Short Description	Rabbit polyclonal antibody anti-macroH2A.1 (123-372) is suitable for use in Western Blot, Immunohistochemistry and Immunofluorescence.
Applications	WB, IHC, IF
Host/Source	Rabbit
Reactivity	Human, Mouse, Rat

PRODUCT PROPERTIES

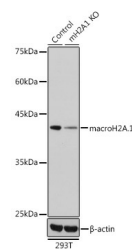
Clonality	Polyclonal
Clone ID	
Concentration	
Conjugation	Unconjugated
Purification	Affinity purification
Dilution Range	WB 1:500-1:2000 IHC 1:50-1:200 IF 1:50-1:100
Formulation	PBS containing 0.02% Sodium Azide, 50% Glycerol, pH7.3.
Isotype	IgG
Storage Instruction	Store in a freezer at -20°C and avoid freeze-thaw cycles.

TARGET INFORMATION

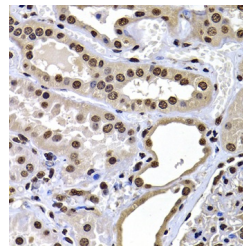
Gene ID	9555
Gene Symbol	MACROH2A1
Uniprot ID	H2AY_HUMAN
Immunogen	Recombinant fusion protein containing a sequence corresponding to amino acids 123-372 of human H2AFY (NP_613258.2).
Immunogen Region	123-372
Specificity	
Immunogen Sequence	



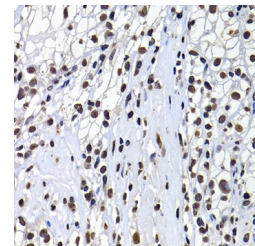
Western blot analysis of extracts of various cell lines, using macroH2A. 1 antibody (STJ29125) at 1:1000 dilution. Secondary antibody: HRP Goat Anti-rabbit IgG (H+L) at 1:10000 dilution. Lysates/proteins: 25ug per lane. Blocking buffer: 3% nonfat dry milk in TBST. Detection: ECL Basic Kit. Exposure time: 120s.



Western blot analysis of extracts from normal (control) and macroH2A. 1 rabbit polyclonal antibody knockout (KO) 293T cells, using macroH2A. 1 rabbit polyclonal antibody (STJ29125) at 1:1000 dilution. Secondary antibody: HRP Goat Anti-rabbit IgG (H+L) at 1:10000 dilution. Lysates/proteins: 25ug per lane. Blocking buffer: 3% nonfat dry milk in TBST. Detection: ECL Basic Kit. Exposure time: 1s.



Immunohistochemistry of paraffin-embedded human kidney using macroH2A. 1 antibody (STJ29125) at dilution of 1:100 (40x lens).



Immunohistochemistry of paraffin-embedded human kidney cancer using macroH2A. 1 antibody (STJ29125) at dilution of 1:100 (40x lens).