

Anti-CCNE2 antibody (255-404) (STJ29112)

STJ29112

GENERAL INFORMATION

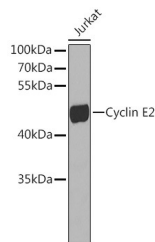
Product Type	Primary antibodies
Short Description	Rabbit polyclonal antibody anti-CCNE2 (255-404) is suitable for use in Western Blot and Immunofluorescence.
Applications	WB, IF
Host/Source	Rabbit
Reactivity	Human

PRODUCT PROPERTIES

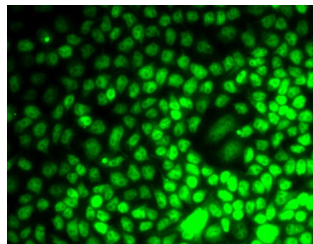
Clonality	Polyclonal
Clone ID	—
Concentration	—
Conjugation	Unconjugated
Purification	Affinity purification
Dilution Range	WB 1:500-1:2000 IF 1:50-1:200
Formulation	PBS containing 0.02% Sodium Azide, 50% Glycerol, pH7.3.
Isotype	IgG
Storage Instruction	Store in a freezer at -20°C and avoid freeze-thaw cycles.

TARGET INFORMATION

Gene ID	9134
Gene Symbol	CCNE2
Uniprot ID	CCNE2_HUMAN
Immunogen	Recombinant fusion protein containing a sequence corresponding to amino acids 255-404 of human Cyclin E2 (NP_477097.1).
Immunogen Region	255-404
Specificity	—
Immunogen Sequence	—



Western blot analysis of extracts of Jurkat cells, using Cyclin E2 antibody (STJ29112). Secondary antibody: HRP Goat Anti-rabbit IgG (H+L) at 1:10000 dilution. Lysates/proteins: 25µg per lane. Blocking buffer: 3% nonfat dry milk in TBST.



Immunofluorescence analysis of MCF7 cells using Cyclin E2 antibody (STJ29112).

This product is suitable for in-vitro studies under the RESEARCH USE ONLY [RUO] licence. This product must not be used as for diagnostic or other medical purposes.
St John's Laboratory Ltd, Knowledge Dock Business Centre, University Way, London, E16 2RD | Tel: 0208 223 3081