

Anti-HIRIP3 antibody (417-556) (STJ29094)

STJ29094

GENERAL INFORMATION

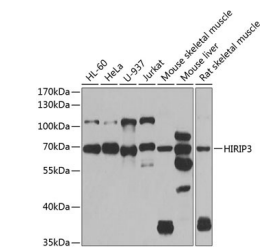
| | |
|--------------------------|--|
| Product Type | Primary antibodies |
| Short Description | Rabbit polyclonal antibody anti-HIRIP3 (417-556) is suitable for use in Western Blot, Immunohistochemistry and Immunofluorescence. |
| Applications | WB, IHC, IF |
| Host/Source | Rabbit |
| Reactivity | Human, Mouse, Rat |

PRODUCT PROPERTIES

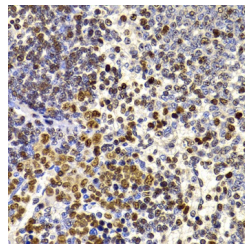
| | |
|----------------------------|---|
| Clonality | Polyclonal |
| Clone ID | |
| Concentration | |
| Conjugation | Unconjugated |
| Purification | Affinity purification |
| Dilution Range | WB 1:500-1:2000 IHC 1:50-1:200 IF 1:50-1:100 |
| Formulation | PBS containing 0.02% Sodium Azide, 50% Glycerol, pH7.3. |
| Isotype | IgG |
| Storage Instruction | Store in a freezer at -20°C and avoid freeze-thaw cycles. |

TARGET INFORMATION

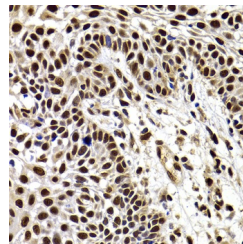
| | |
|---------------------------|--|
| Gene ID | 8479 |
| Gene Symbol | HIRIP3 |
| Uniprot ID | HIRP3_HUMAN |
| Immunogen | Recombinant fusion protein containing a sequence corresponding to amino acids 417-556 of human HIRIP3 (NP_003600.2). |
| Immunogen Region | 417-556 |
| Specificity | |
| Immunogen Sequence | |



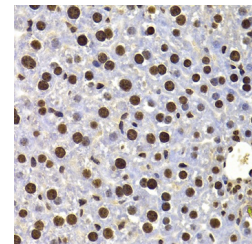
Western blot analysis of extracts of various cell lines, using HIRIP3 antibody (STJ29094) at 1:1000 dilution. Secondary antibody: HRP Goat Anti-rabbit IgG (H+L) at 1:10000 dilution. Lysates/proteins: 25µg per lane. Blocking buffer: 3% nonfat dry milk in TBST. Detection: ECL Basic Kit. Exposure time: 90s.



Immunohistochemistry of paraffin-embedded rat spleen using HIRIP3 antibody (STJ29094) at dilution of 1:100 (40x lens).



Immunohistochemistry of paraffin-embedded human well-differentiated squamous skin carcinoma using HIRIP3 antibody (STJ29094) at dilution of 1:100 (40x lens).



Immunohistochemistry of paraffin-embedded mouse liver using HIRIP3 antibody (STJ29094) at dilution of 1:100 (40x lens).