

Anti-AFF1 antibody (1124-1218) (STJ29013)

STJ29013

GENERAL INFORMATION

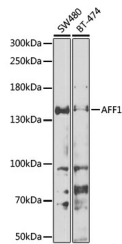
| | |
|--------------------------|--|
| Product Type | Primary antibodies |
| Short Description | Rabbit polyclonal antibody anti-AFF1 (1124-1218) is suitable for use in Western Blot, Immunohistochemistry and Immunofluorescence. |
| Applications | WB, IHC, IF |
| Host/Source | Rabbit |
| Reactivity | Human, Rat |

PRODUCT PROPERTIES

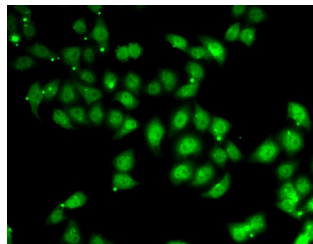
| | |
|----------------------------|---|
| Clonality | Polyclonal |
| Clone ID | |
| Concentration | |
| Conjugation | Unconjugated |
| Purification | Affinity purification |
| Dilution Range | WB 1:500-1:2000 IHC 1:50-1:200 IF 1:50-1:100 |
| Formulation | PBS containing 0.02% Sodium Azide, 50% Glycerol, pH7.3. |
| Isotype | IgG |
| Storage Instruction | Store in a freezer at -20°C and avoid freeze-thaw cycles. |

TARGET INFORMATION

| | |
|---------------------------|---|
| Gene ID | 4299 |
| Gene Symbol | AFF1 |
| Uniprot ID | AFF1_HUMAN |
| Immunogen | Recombinant fusion protein containing a sequence corresponding to amino acids 1124-1218 of human AFF1 (NP_001160165.1). |
| Immunogen Region | 1124-1218 |
| Specificity | |
| Immunogen Sequence | |



Western blot analysis of extracts of various cell lines, using AFF1 antibody (STJ29013) at 1:1000 dilution. Secondary antibody: HRP Goat Anti-rabbit IgG (H+L) at 1:10000 dilution. Lysates/proteins: 25µg per lane. Blocking buffer: 3% nonfat dry milk in TBST. Detection: ECL Enhanced Kit. Exposure time: 30s.



Immunofluorescence analysis of U2OS cells using AFF1 antibody (STJ29013).